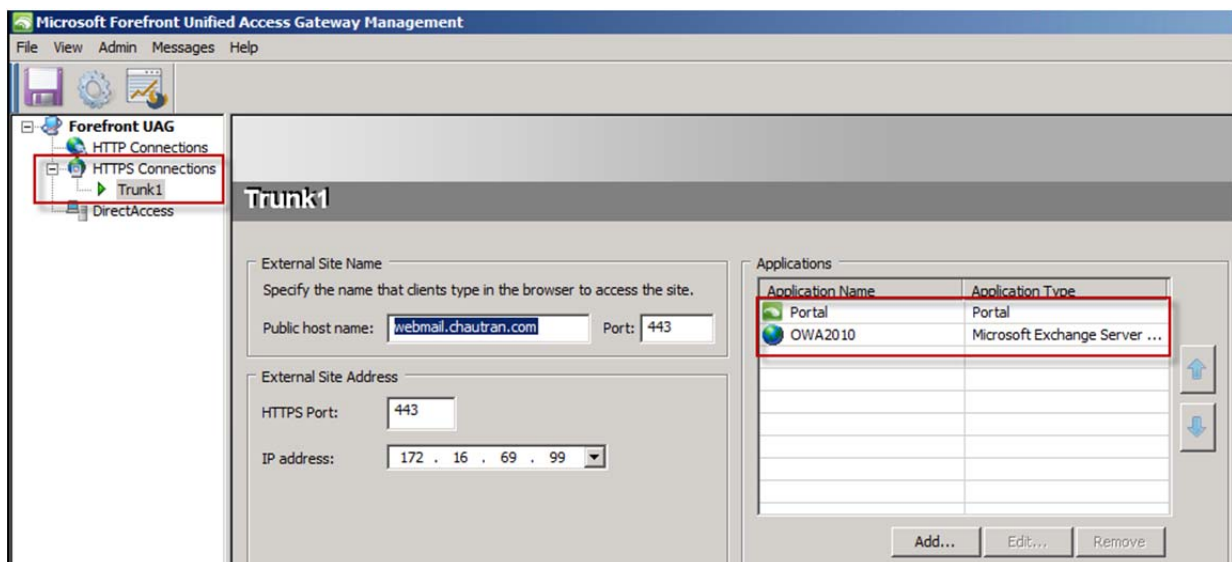


Publishing Enterprise Vault 10 SP1 Server with Microsoft Forefront UAG 2010 SP2

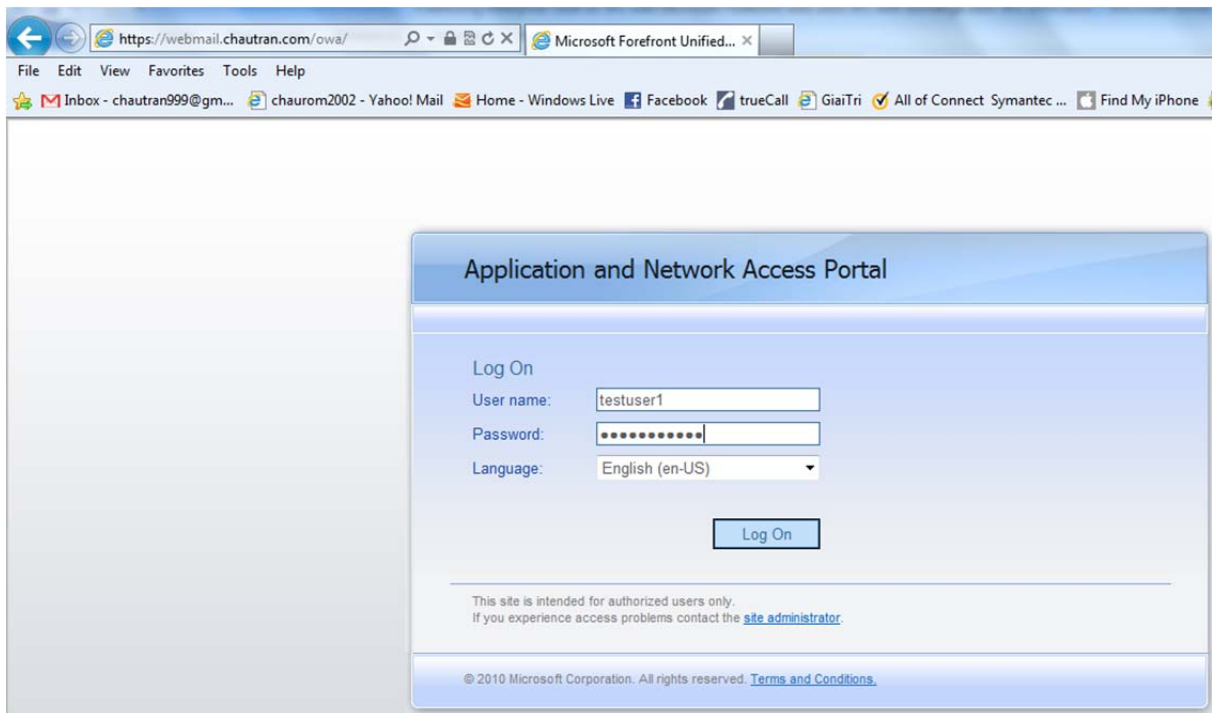
Note: The instructions below will assume the following; e.g. EV OWA had already been configured on existing ISA2006/TMG2010 and you need to migrate to UAG 2010:

1. The Exchange 2010 OWA is already setup and configured correctly via the UAG 2010 i.e. trunk, portal and exchange application etc. for more information please refer to Microsoft Technet such as: <http://technet.microsoft.com/en-us/library/ee921443.aspx>
2. EV OWA for external access has been configured correctly, i.e. owouser.wsf with ExchangeServers.txt on the EV server, OWA 2010 extensions installed on the CAS 2010 server with the web.config configured correctly. For more info regarding these setup please refer to this Symantec technote: <http://www.symantec.com/business/support/index?page=content&id=HOWTO3820>
[5](#)

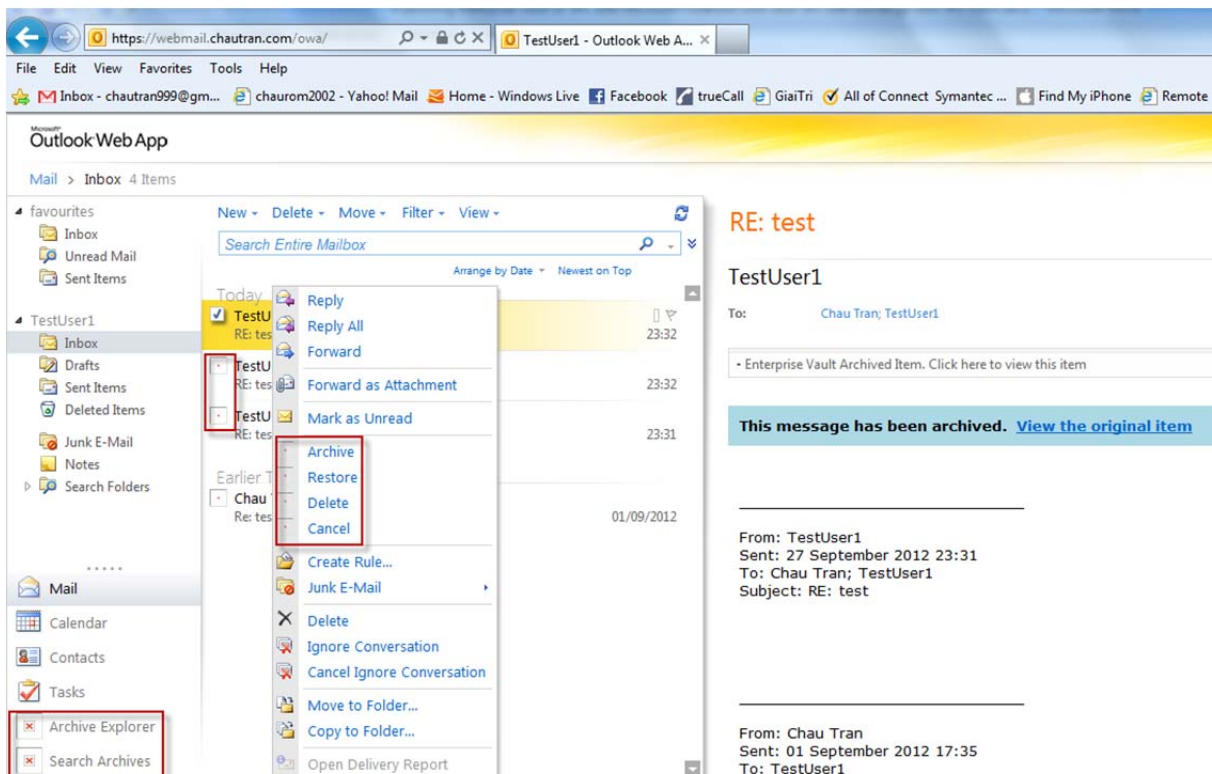
So the UAG Admin Console should look like the screenshot below:



At the OWA 2010 logon screen (it's actually the UAG Portal logon screen):



Once logged in, OWA 2010 looks like this:



Problems:

1. EV forms and icons are not displaying correctly.
2. Restoring, archiving and retrieval of archived messages do not work.

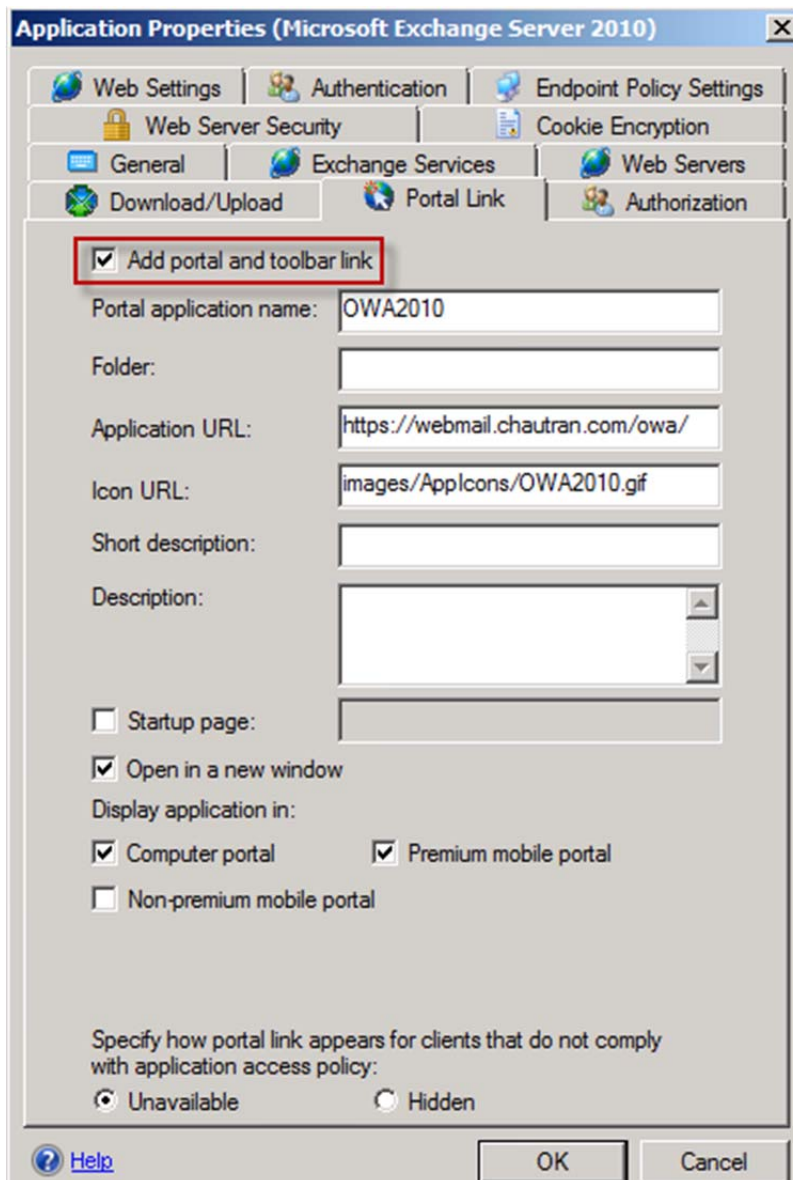
Chau Tran - 14th October 2012

3. The links to Search and Archive Explorer do not work.

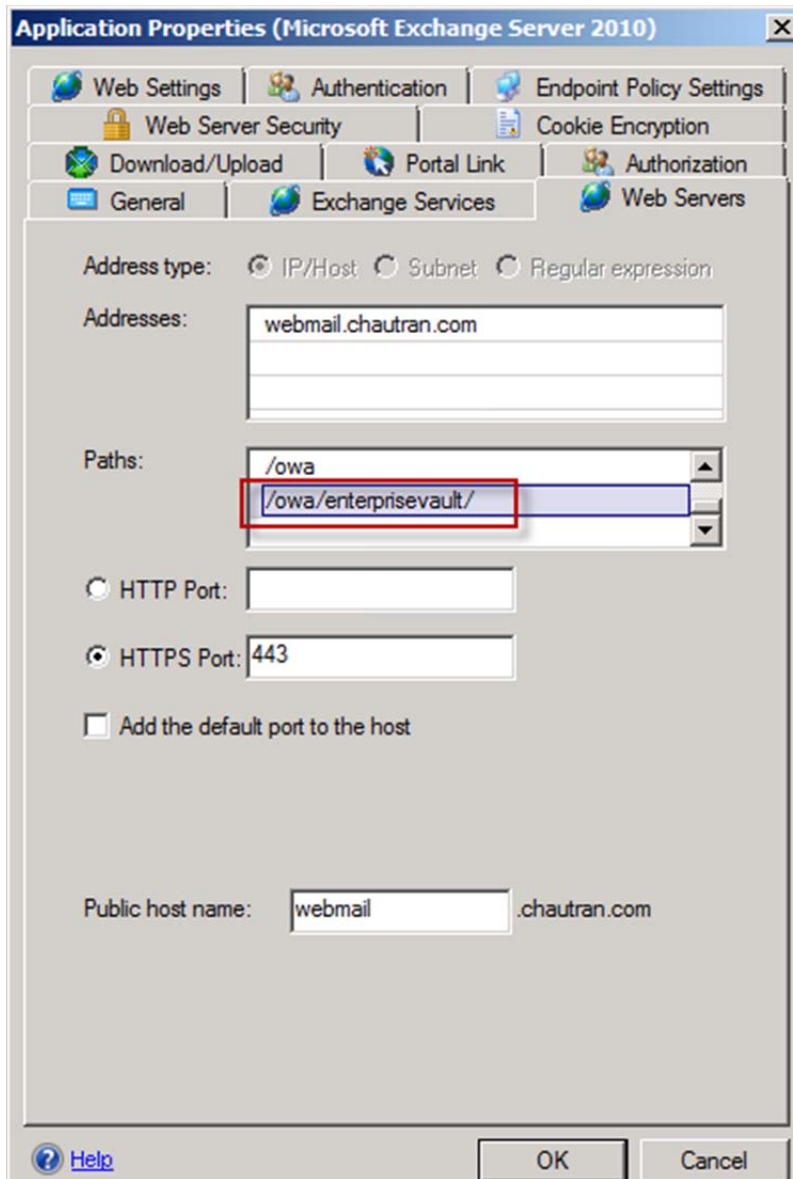
Note: Normal OWA 2010 functions work fine.

To fix the EV forms, icons and EV's functionality issues

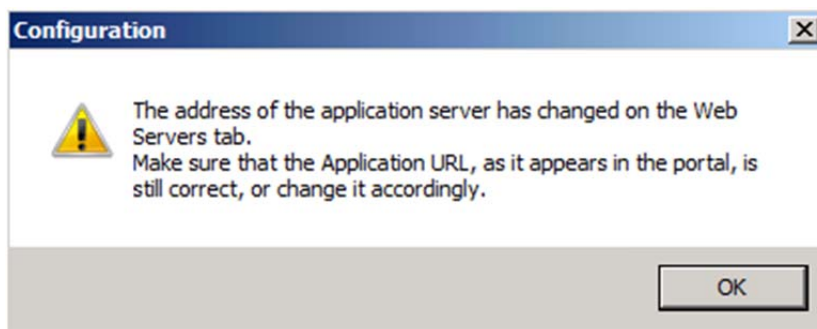
1. Open the OWA2010 Application
2. Go to the Portal Link tab and un-tick the "Add portal and toolbar link" option



3. Click on the Web Servers tab and add /owa/enterprisevault/ in the Paths area and click OK.



4. The following warning pops up, click OK to close it and click OK again to close the OWA2010 application.



5. Click on the Configure... button in the Trunk Configuration area:

The screenshot shows a configuration window with several sections:

- External Site Name:** Specify the name that clients type in the browser to access the site. Public host name: Port:
- External Site Address:** HTTPS Port: IP address:
- Initial Internal Application:** Portal home page: Display home page within portal frame.
- Trunk Configuration:** Configure trunk settings:
- Applications:** A table listing applications:

Application Name	Application Type
Portal	Portal
OWA2010	Microsoft Exchange Server ...
- Limit applications to the following subnets:** A table with columns Subnet Address and Subnet Mask.

6. Click on the URL Set tab and add another ExchangePub2010 Rule, call it for example, ExchangePub2010_Rule43, using the following configuration:

The screenshot shows the 'Advanced Trunk Configuration [Trunk1]' window with the 'URL Set' tab selected. The 'URL list' table is as follows:

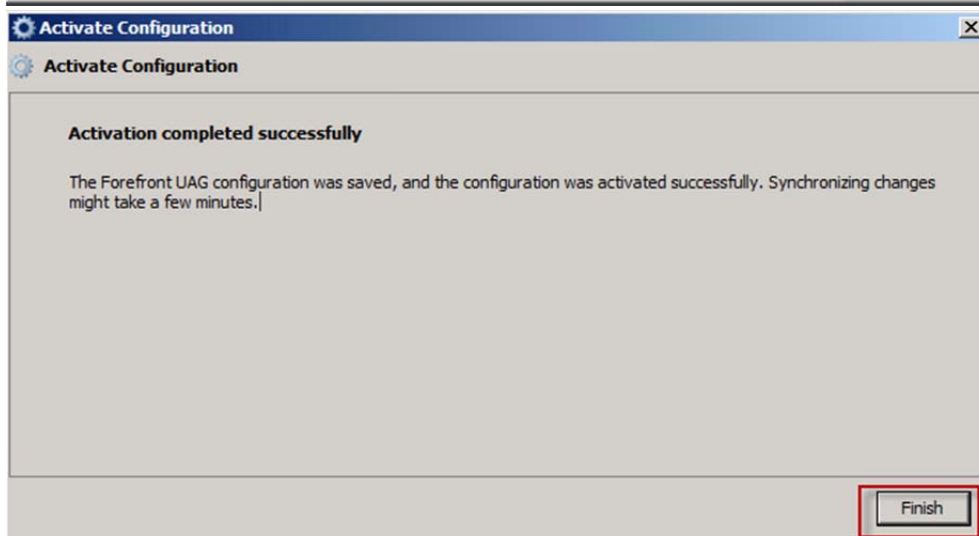
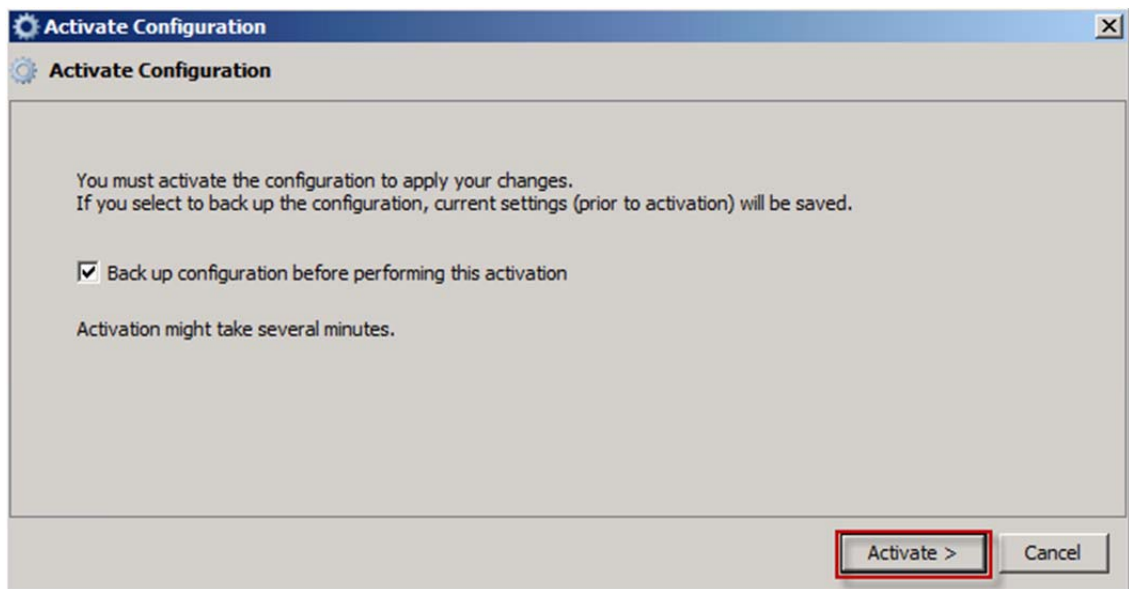
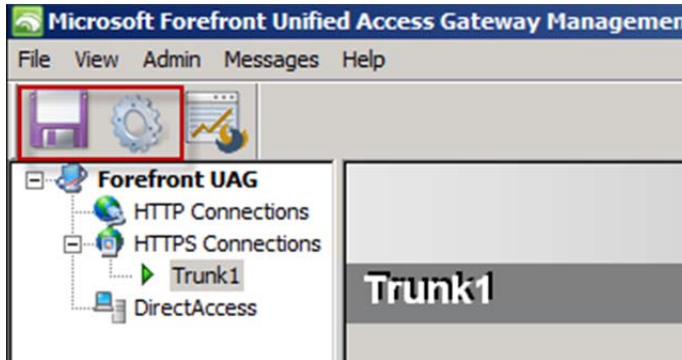
Name	Action	URL	Parameters	Note	Methods
ExchangePub2010_Rule34	Accept	/microsoft-server-ac...	Ignore		OPTIONS, P...
ExchangePub2010_Rule35	Accept	/owa/auth/ev.owa.*	Ignore		POST, GET
ExchangePub2010_Rule36	Accept	/rpc/rpcproxy.dll	Ignore		RPC_OUT_D...
ExchangePub2010_Rule37	Accept	/owa/auth/error\.aspx.*	Ignore		POST, GET
ExchangePub2010_Rule38	Accept	/owa/urlblockederror...	Ignore		GET
ExchangePub2010_Rule39	Accept	/exchange.*	Ignore		POST, GET
ExchangePub2010_Rule40	Accept	/exchweb.*	Ignore		PROPFIND, P...
ExchangePub2010_Rule41	Accept	/owa/csdc\gif	Ignore		POST, GET
ExchangePub2010_Rule42	Accept	/owa(/[a-z0-9._]+...	Ignore		GET
ExchangePub2010_Rule43	Accept	/owa/enterprisevault/*	Ignore		GET

Below the table, there are buttons for 'Copy', 'Paste', 'Add Primary', 'Add Exclude', and 'Remove'. A 'Parameter list' table is also visible below the URL list.

Name: ExchangePub2010_Rule43, Action: Accept, URL: /owa/enterprisevault/*, Parameters: Ignore, Methods: GET

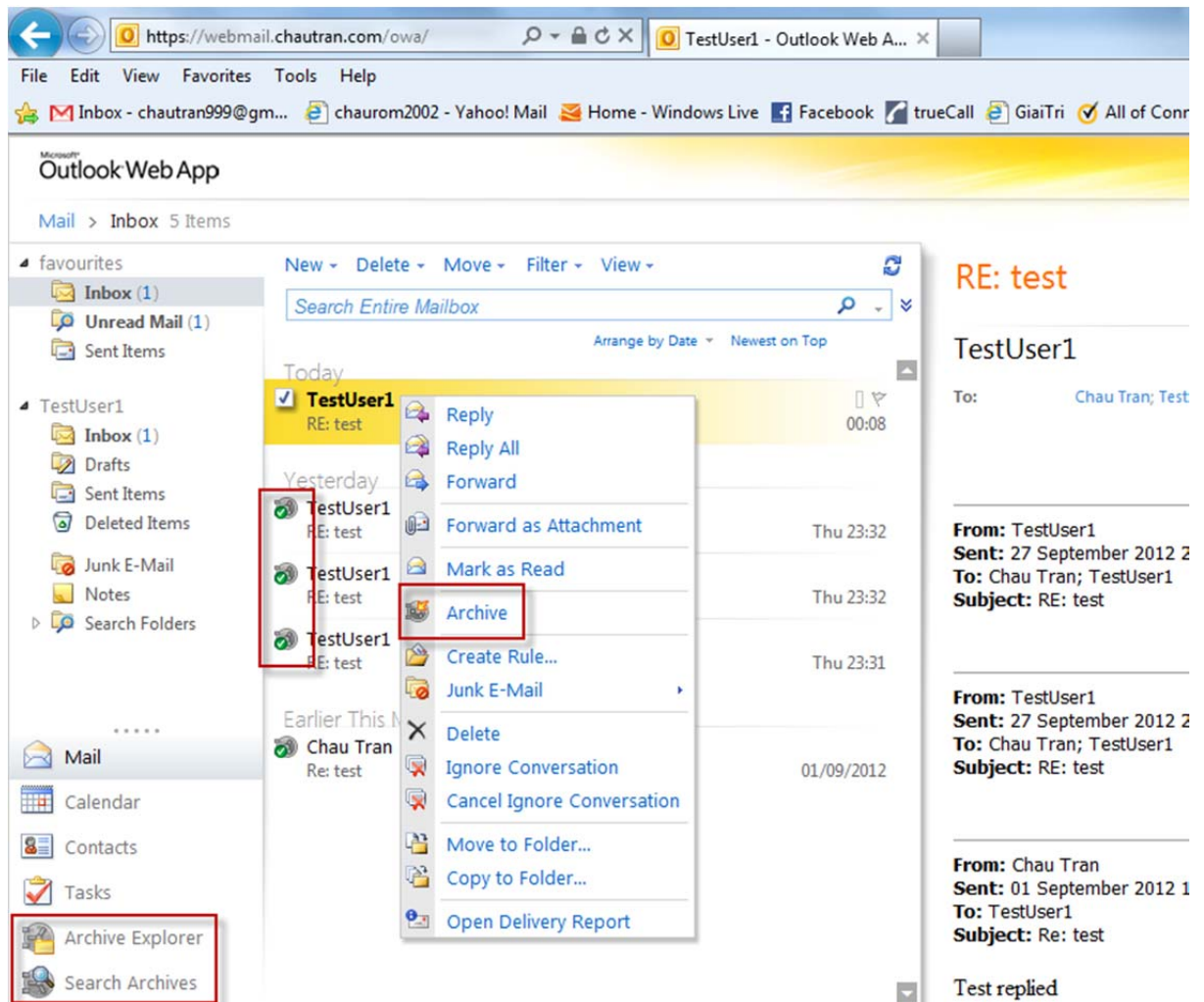
Click OK to commit the changes and close the Trunk Configuration.

7. On the top left of the UAG Admin Console, click on the Save button on the left first and then click the Activate Configuration button and then click Activate.



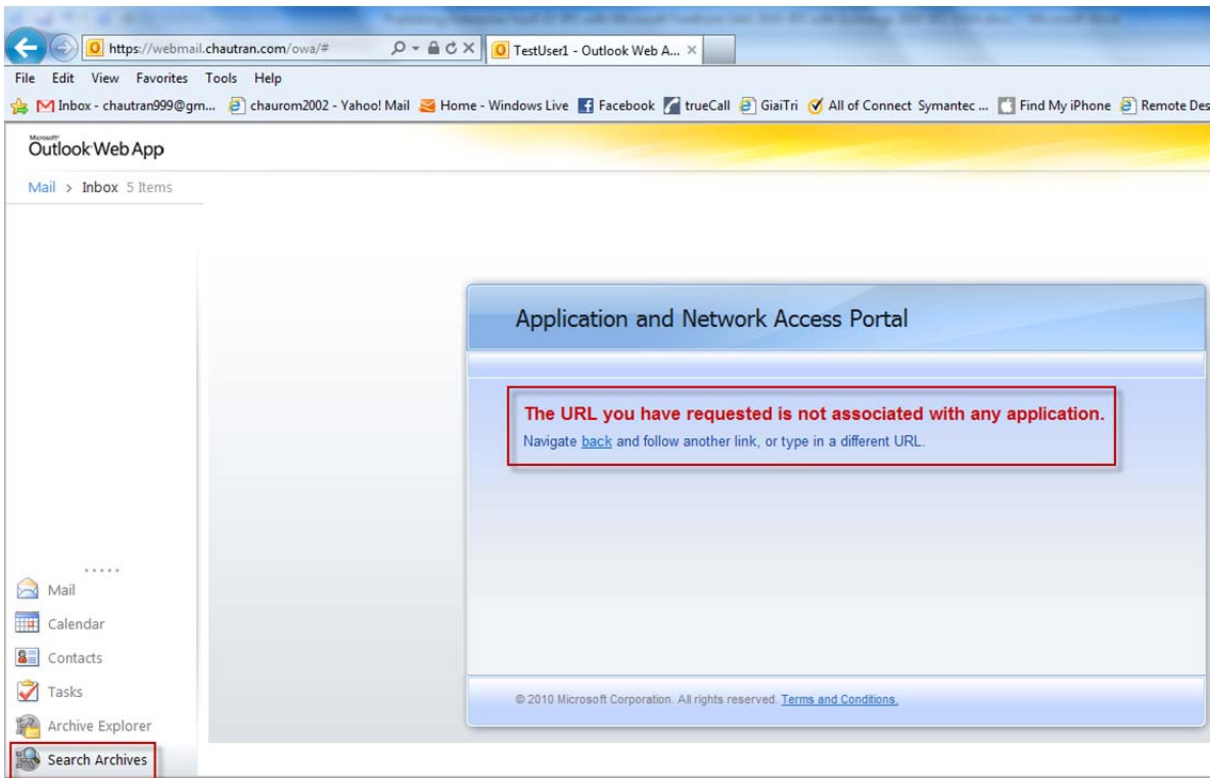
Click Finish.

8. On Internet Explorer logon to OWA2010 and the problems listed above should be fixed:



Retrieval, Restoring and Archiving should work as expected.

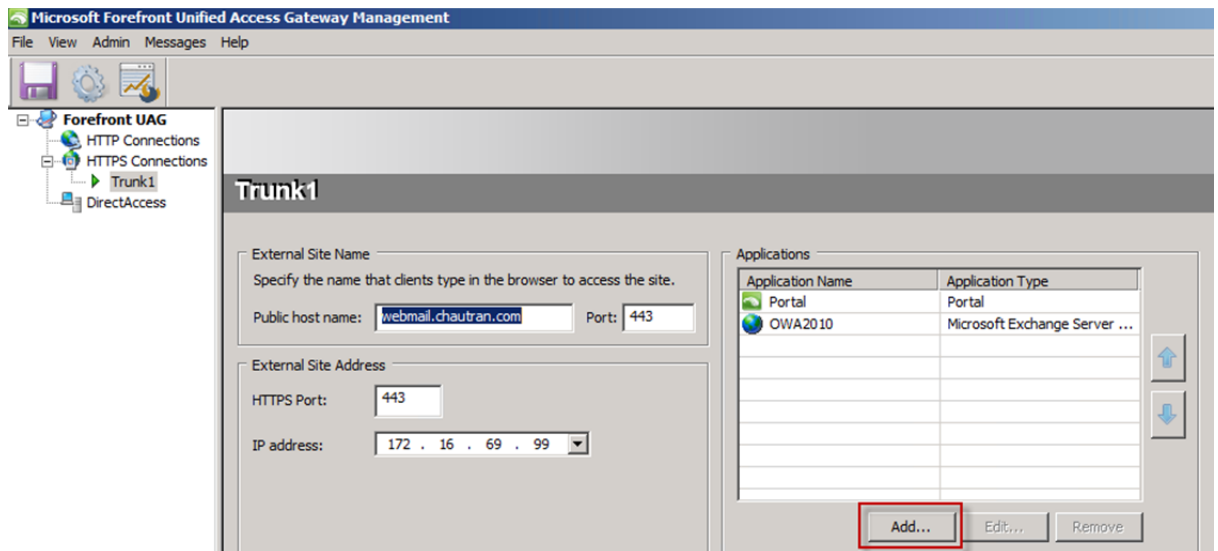
Although the Search and Archive Explorer buttons are now appearing correctly but they do not work as these functions are connecting directly to the Enterprise Vault server and the EV server is yet to be published on the UAG 2010 server. The following will appear:



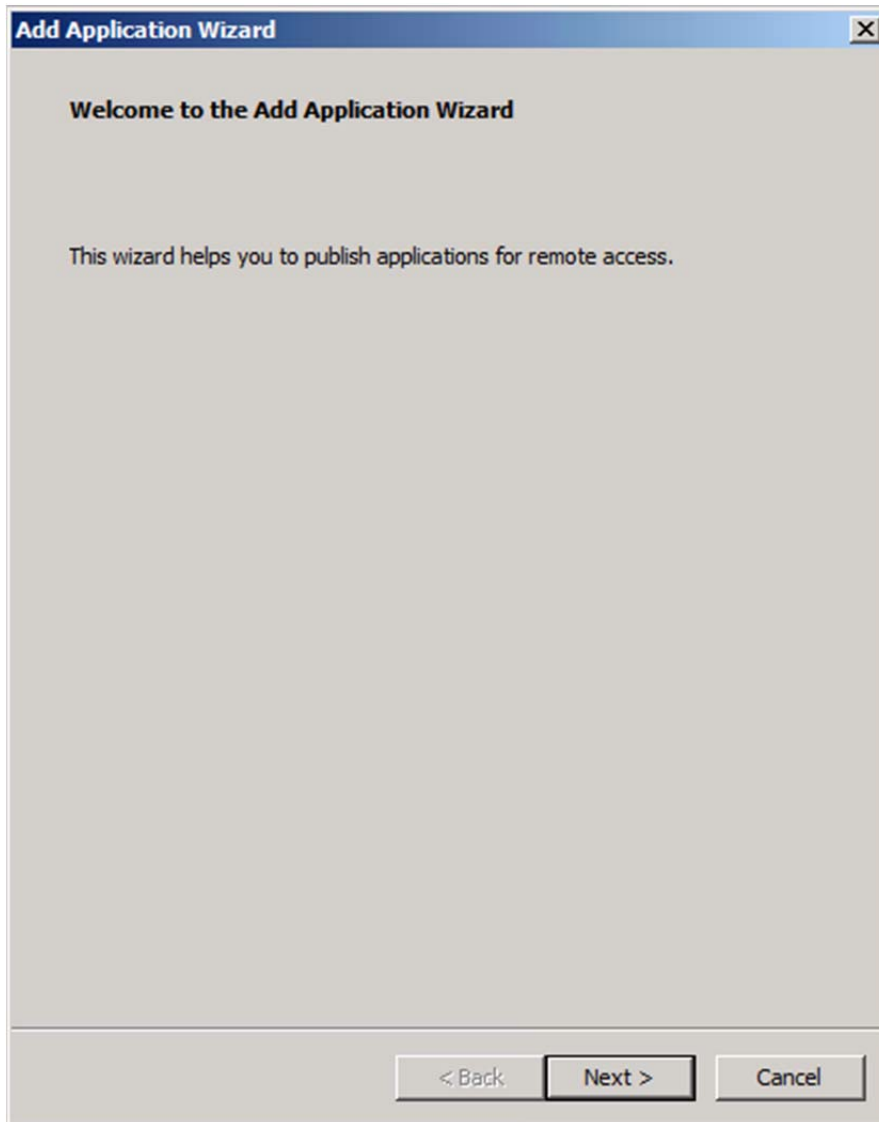
This is because the EV server needs to be published on the UAG 2010 server.

Publishing the EV server on the UAG server

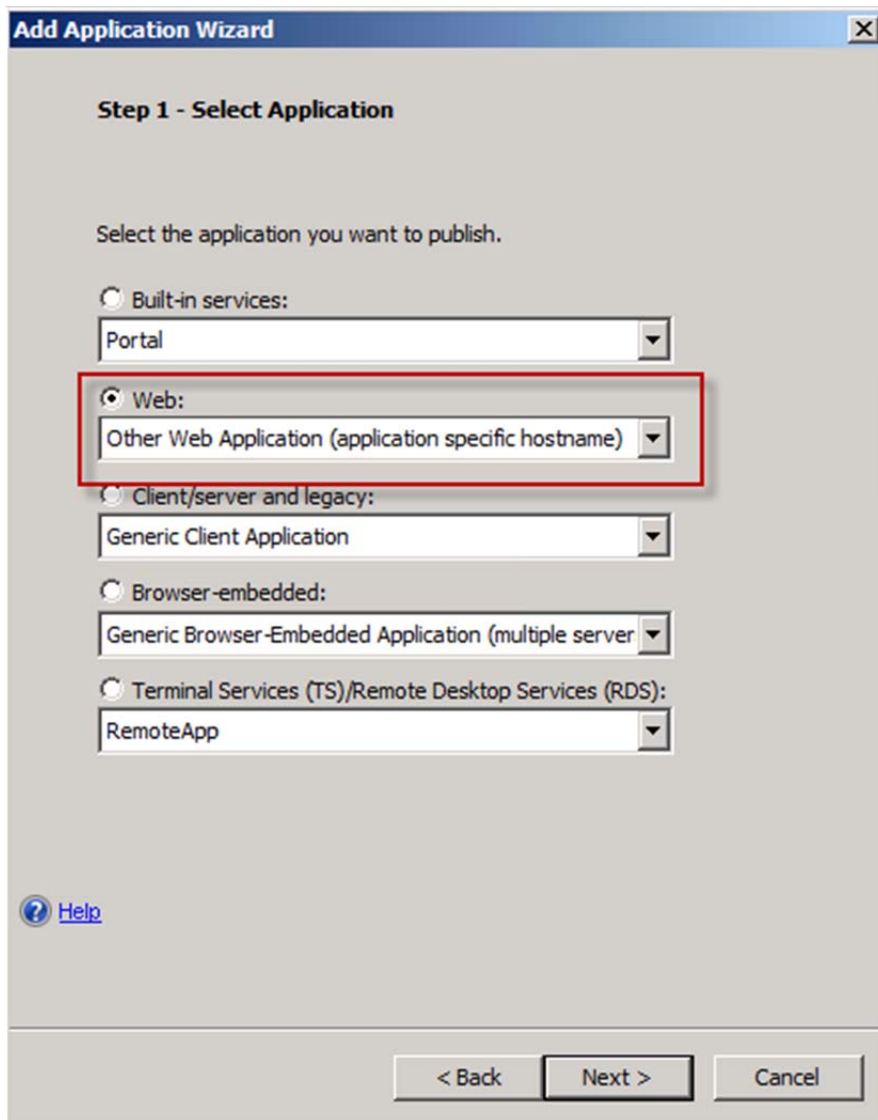
1. On the UAG Admin Console click on Add... under the Applications



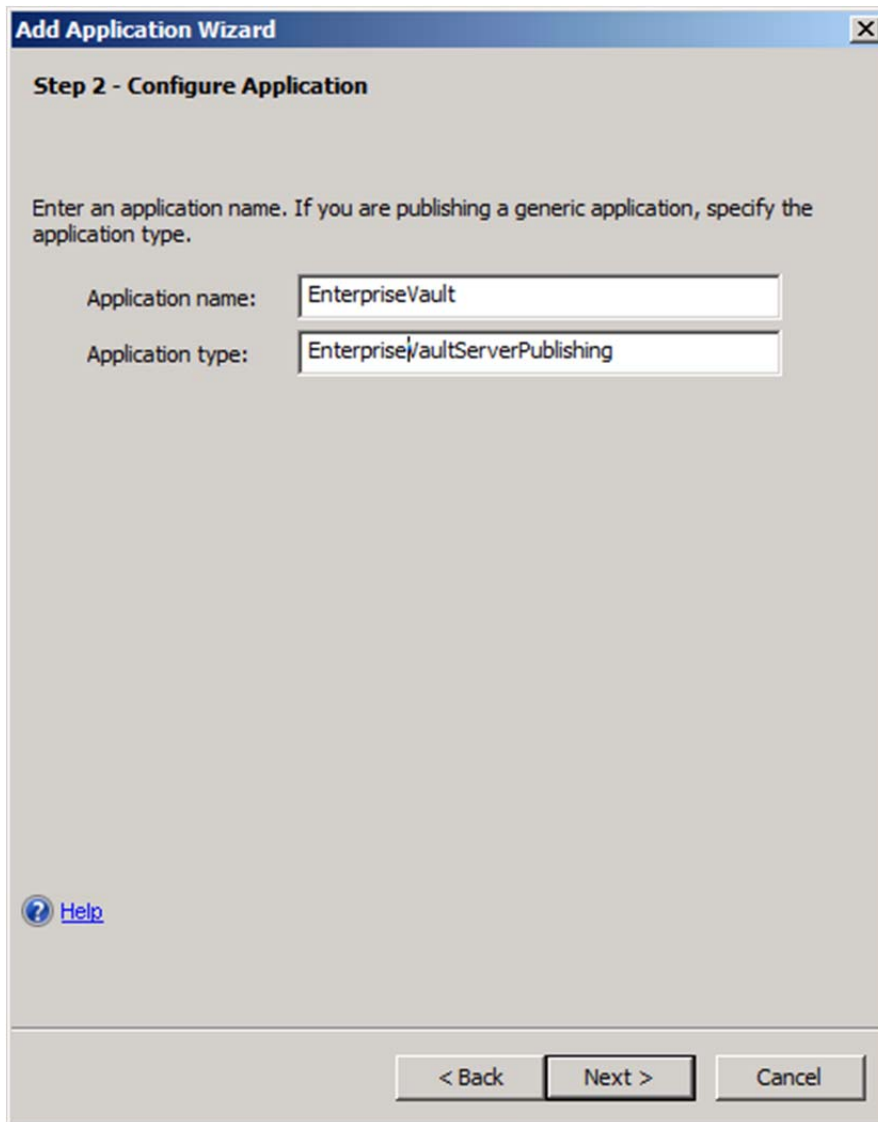
2. On the Add Application Wizard click Next.



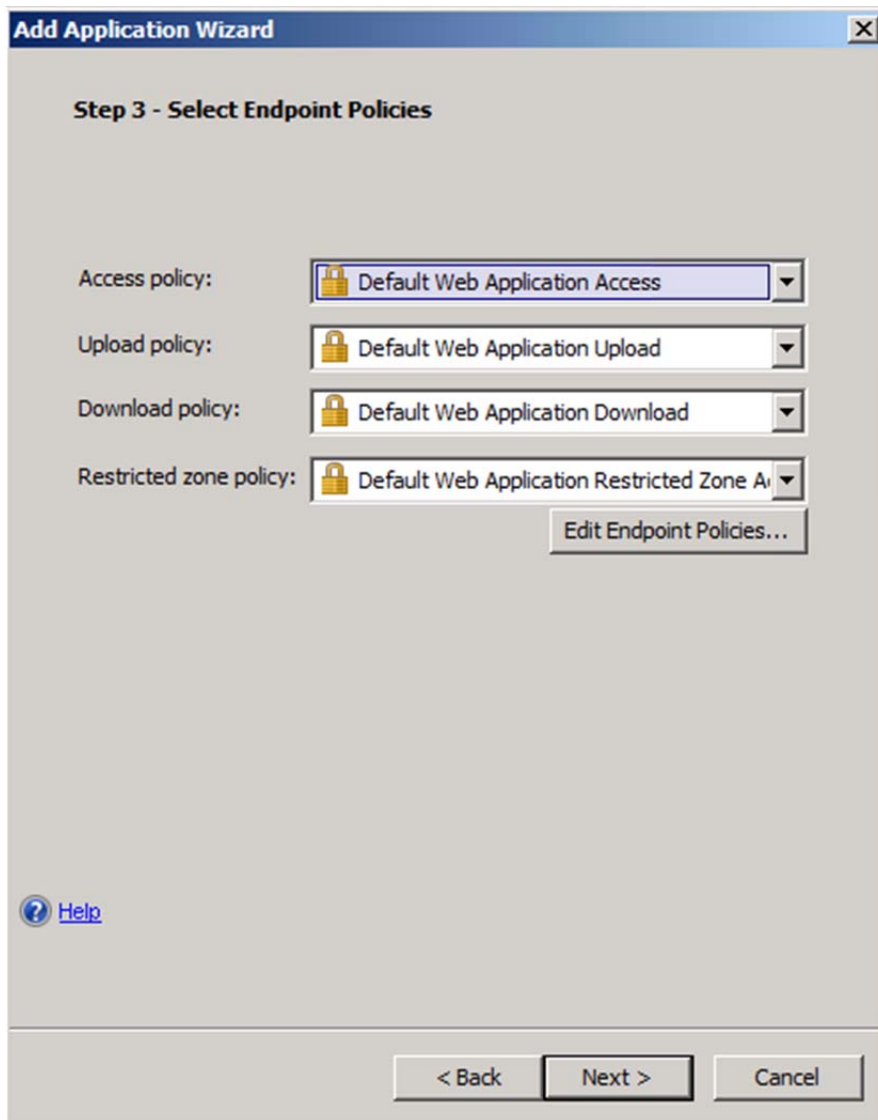
3. Choose Web: Other Web Application (with specific hostname) and click Next



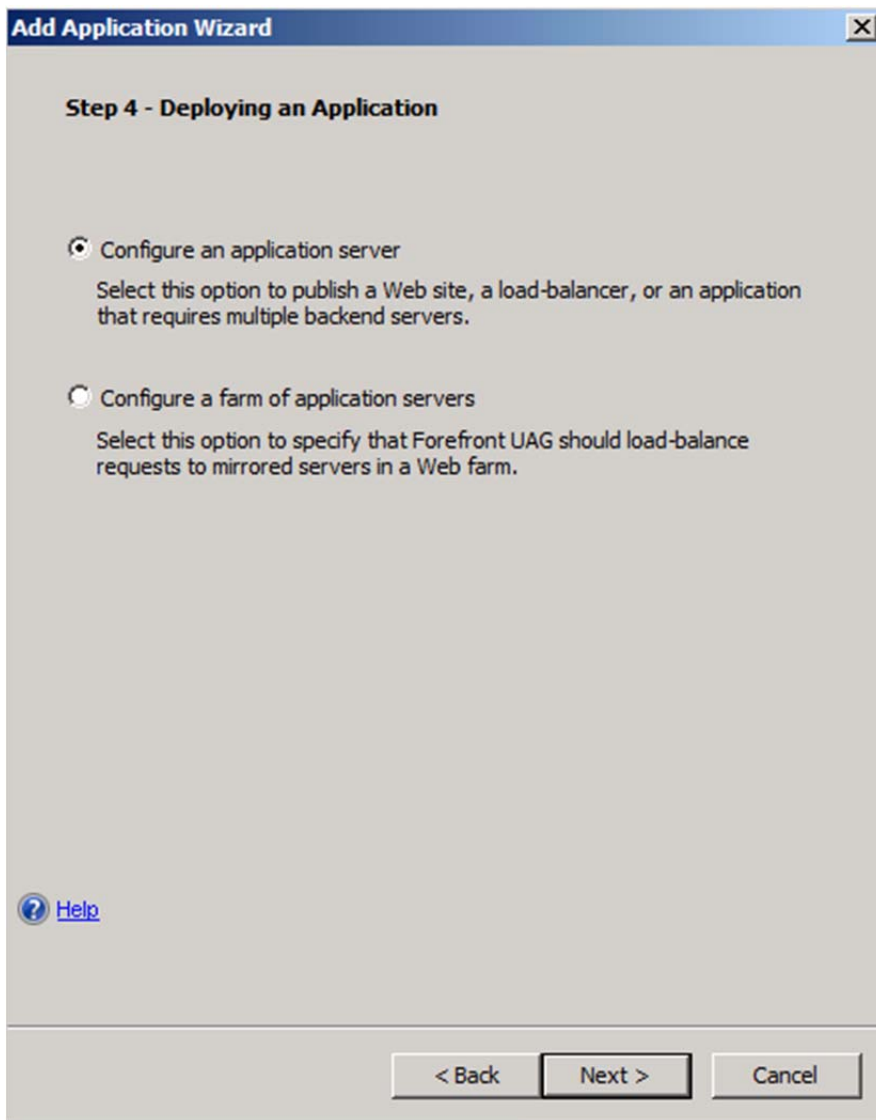
4. Give it an appropriate application name and type and click Next.



5. Leave this step with the defaults and click Next



6. Choose Configure an application server and click Next.



7. In the address type in the EV server alias name (if there are more than one EV servers type them all here). In the Paths, type /enterprisevault/*, in the public host name type in the webmail public host name and click Next.

Add Application Wizard [X]


Step 5 - Web Servers

Address type: IP/Host Subnet Regular expression

Addresses:

Paths:

HTTP port: HTTPS port:

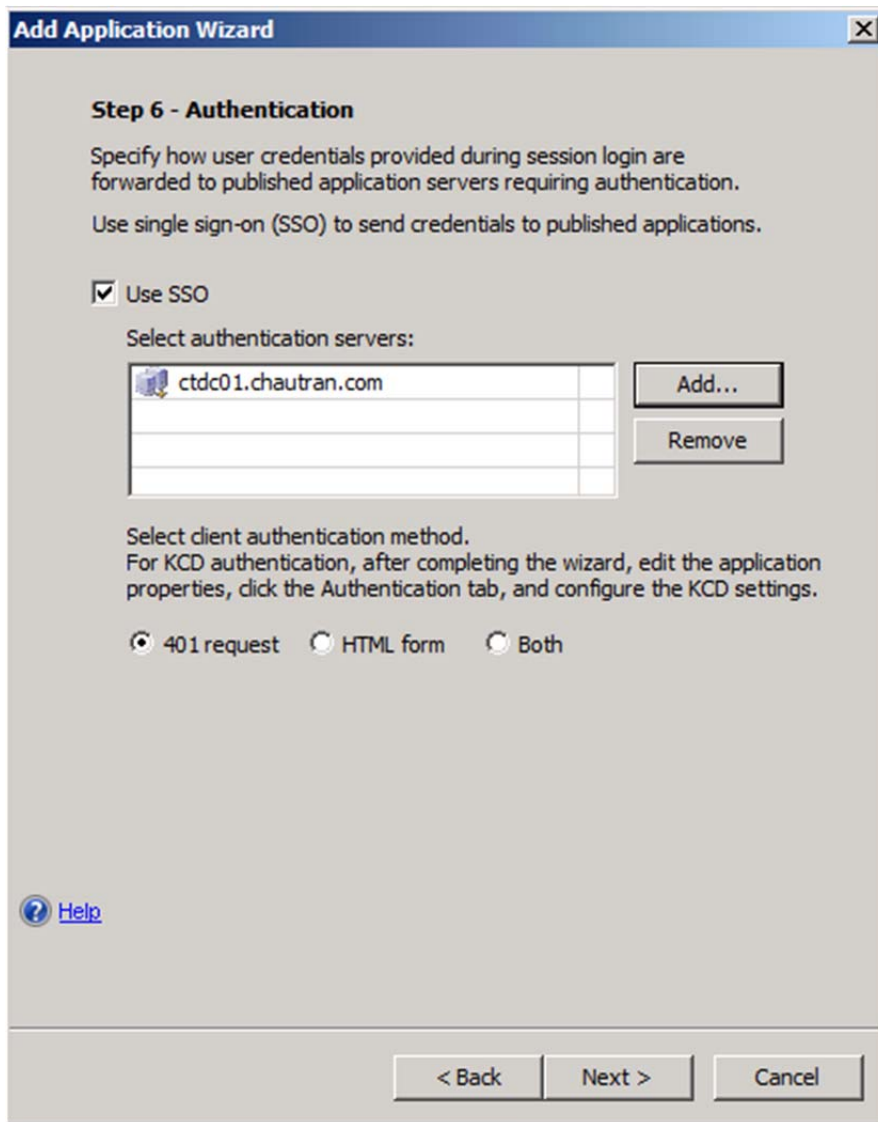
 Public host name: .chautran.com

Replace the host header with the following

[Help](#)

< Back Next > Cancel

8. Tick the box to use SSO and click Add... choose the authentication server and then click Next. (The authentication server would have been created when the trunk was created).



9. Untick the “Add a portal and tool bar link” option and click Next.

Add Application Wizard [X]

Step 7 - Portal Link

Add a portal and toolbar link

Portal name: EnterpriseVault

Folder:

Application URL: https://webmail.chautran.com/enterpr

Icon URL: images/AppIcons/App.gif

Short description:

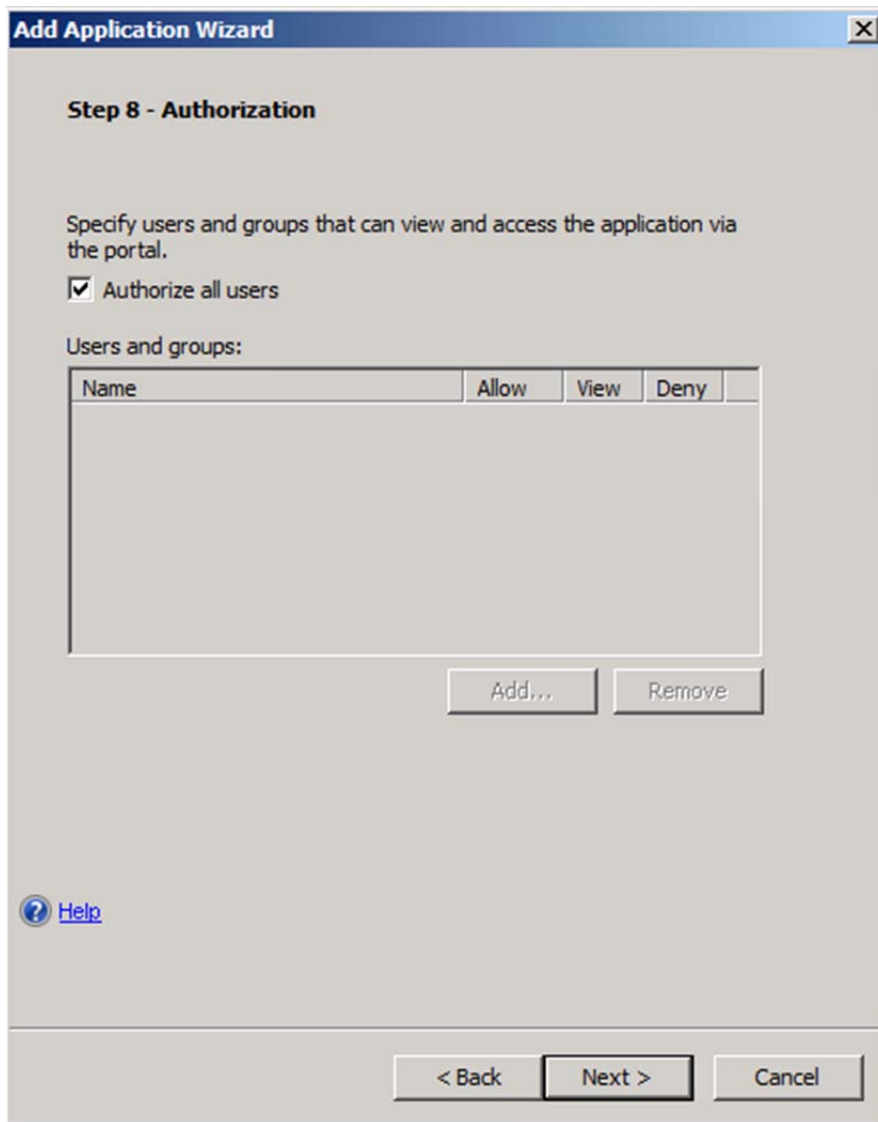
Description:

Open in a new window

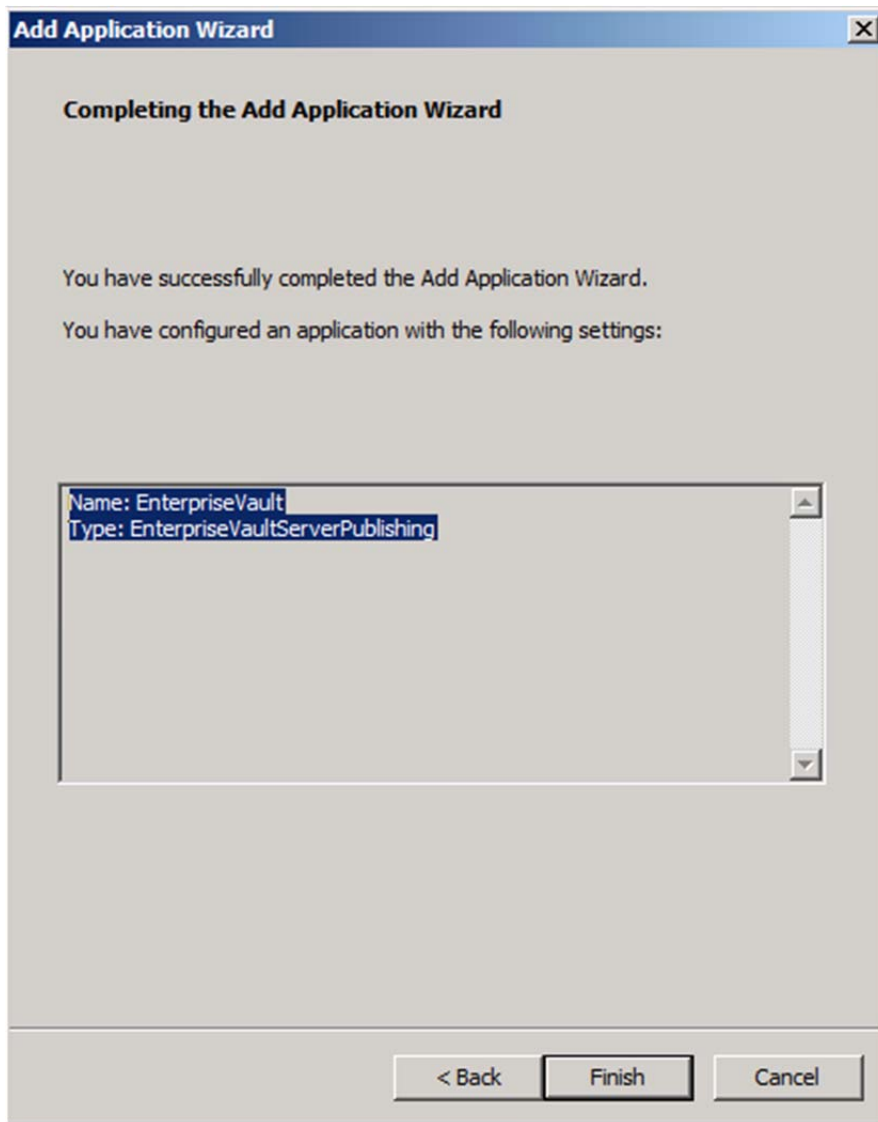
[Help](#)

< Back Next > Cancel

10. Leave the Authorisation as default and click Next.



11. Click Finish to complete the Enterprise Vault server Application publishing



12. On the UAG Admin Console click on the Configure... button in the Trunk Configuration area.

External Site Name
Specify the name that clients type in the browser to access the site.

Public host name: Port:

External Site Address

HTTPS Port:

IP address:

Initial Internal Application

Portal home page:

Display home page within portal frame

Trunk Configuration

Configure trunk settings:

Applications

Application Name	Application Type
Portal	Portal
OWA2010	Microsoft Exchange Server ...
EnterpriseVault	EnterpriseVaultServerPublis...

Add... Edit... Remove

Limit applications to the following subnets:

Subnet Address	Subnet Mask

Add... Edit... Remove

13. Ensure that the following are configured correctly:

Advanced Trunk Configuration [Trunk1]

General Authentication Session Endpoint Access Settings Application Customization

Portal URL Inspection Global URL Settings URL Set

URL list

Name	Action	URL	Parameters	Note	Methods
ExchangePub2010_Rule36	Accept	/rpc/rpcproxy.dll	Ignore		RPC_OUT_D...
ExchangePub2010_Rule37	Accept	/owa/auth/error\.aspx.*	Ignore		POST, GET
ExchangePub2010_Rule38	Accept	/owa/urlblockederror\aspx	Ignore		GET
ExchangePub2010_Rule39	Accept	/exchange.*	Ignore		POST, GET
ExchangePub2010_Rule40	Accept	/exchweb.*	Ignore		PROPFIND, P...
ExchangePub2010_Rule41	Accept	/owa/csdc\gif	Ignore		POST, GET
ExchangePub2010_Rule42	Accept	/owa(/[a-z0-9._-]+@[a-z0-...	Ignore		GET
ExchangePub2010_Rule43	Accept	/owa/enterprisevault.*	Ignore		GET
EnterpriseVaultServerPublishing_Rule1	Accept	/enterprisevault/*	Ignore		POST, GET

All other URLs will be rejected.

Copy Paste Add Primary Add Exclude Remove

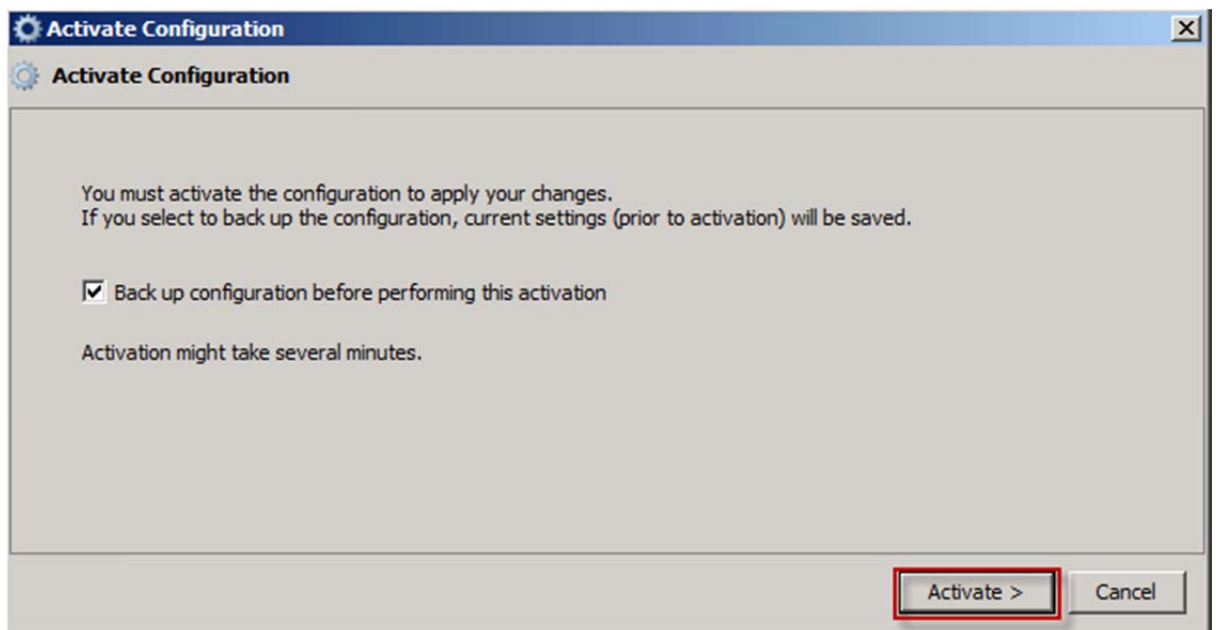
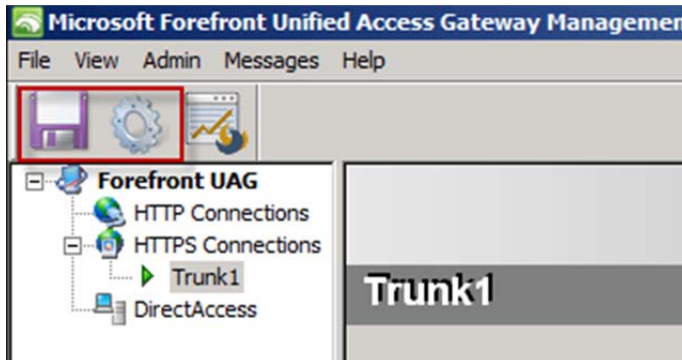
Parameter list:

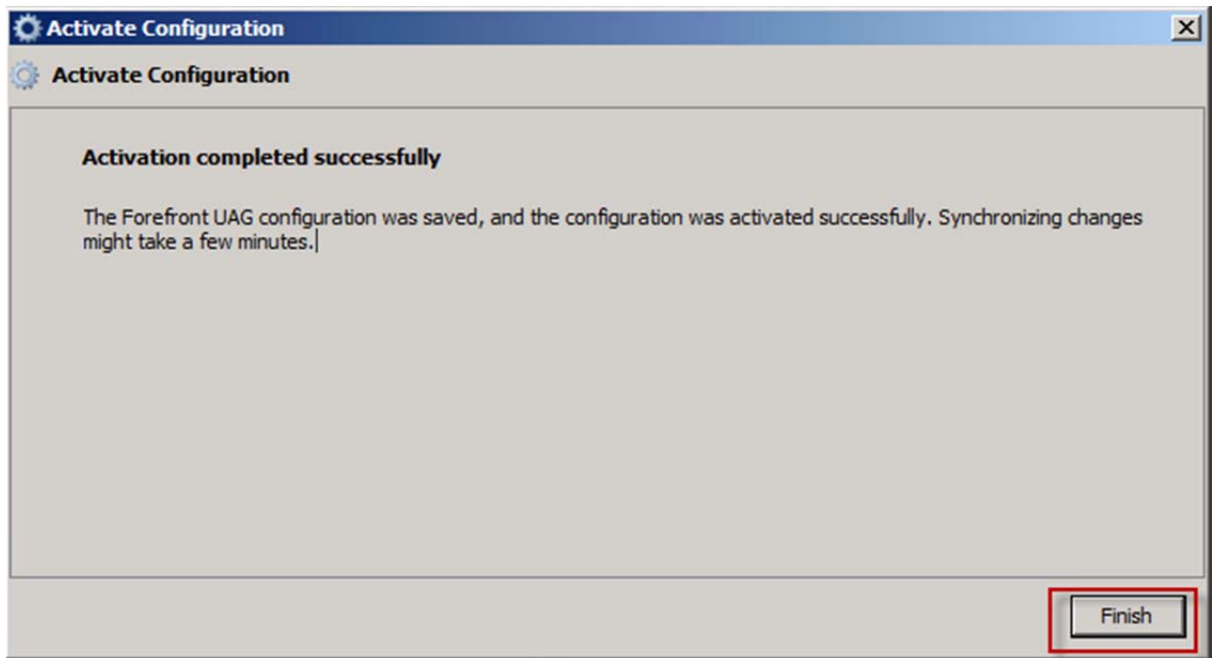
Name	Name Type	Value	Value Type	Length	Existence

Name: EnterpriseVaultServerPublishing_Rule1, Action: Accept, URL: /enterprisevault/*, Parameter: Ignore, Methods: POST, GET

Click OK to commit the changes and close the Trunk Configuration.

14. On the top left of the UAG Admin Console, click on the Save button on the left first and then click the Activate Configuration button and then click Activate.

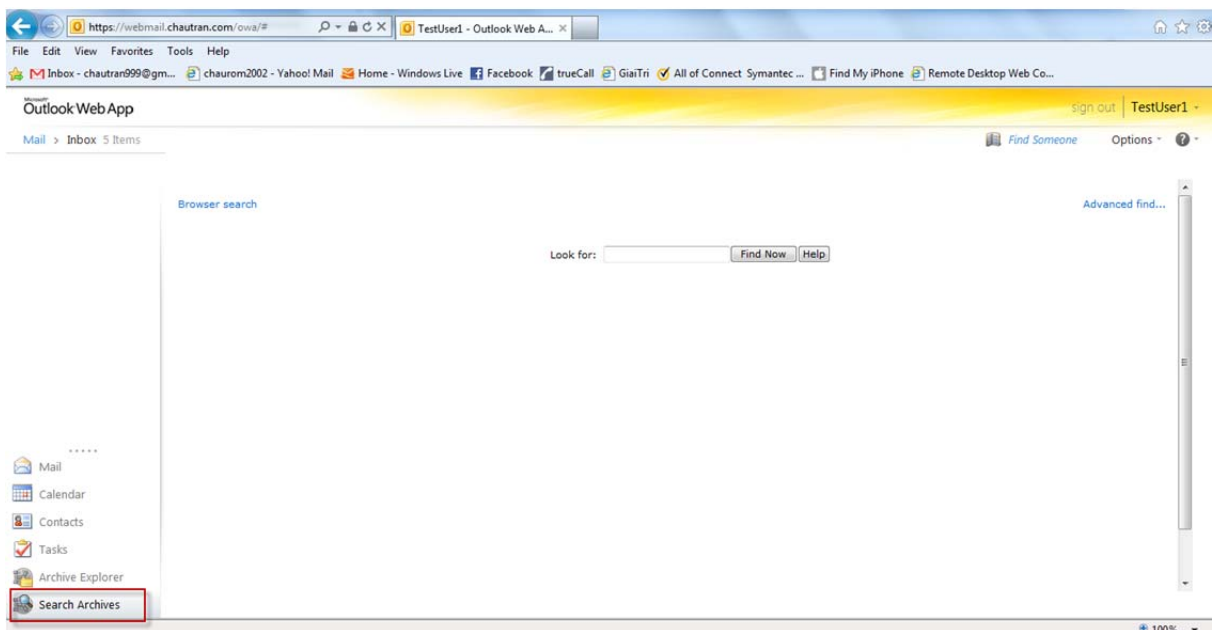




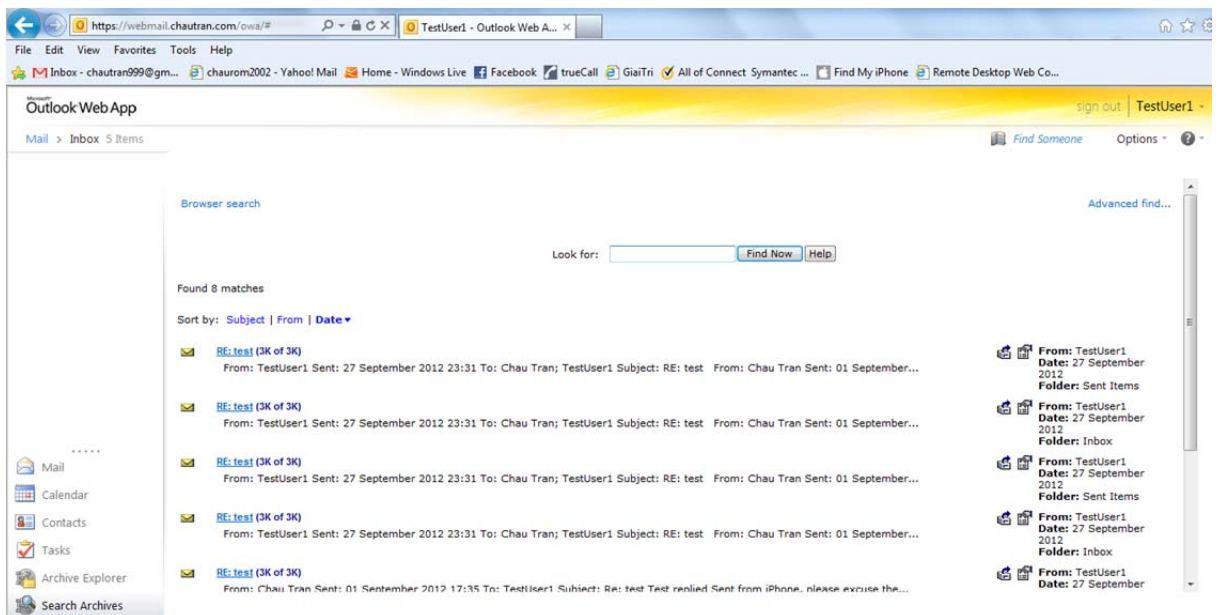
Click Finish.

15. On Internet Explorer logon to OWA 2010 and click on the Search or/and Archive Explorer, these two EV functions should now work as expected.

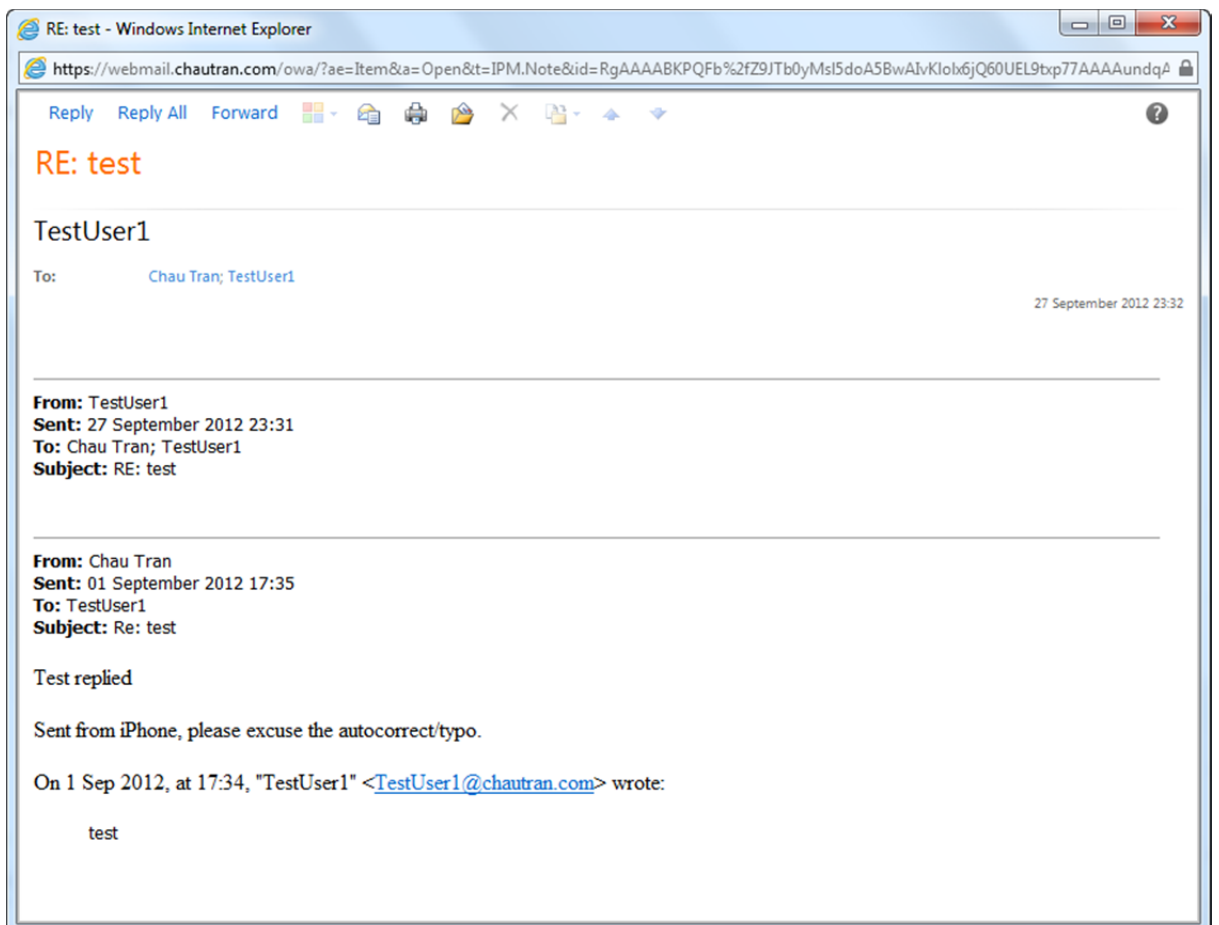
Search:



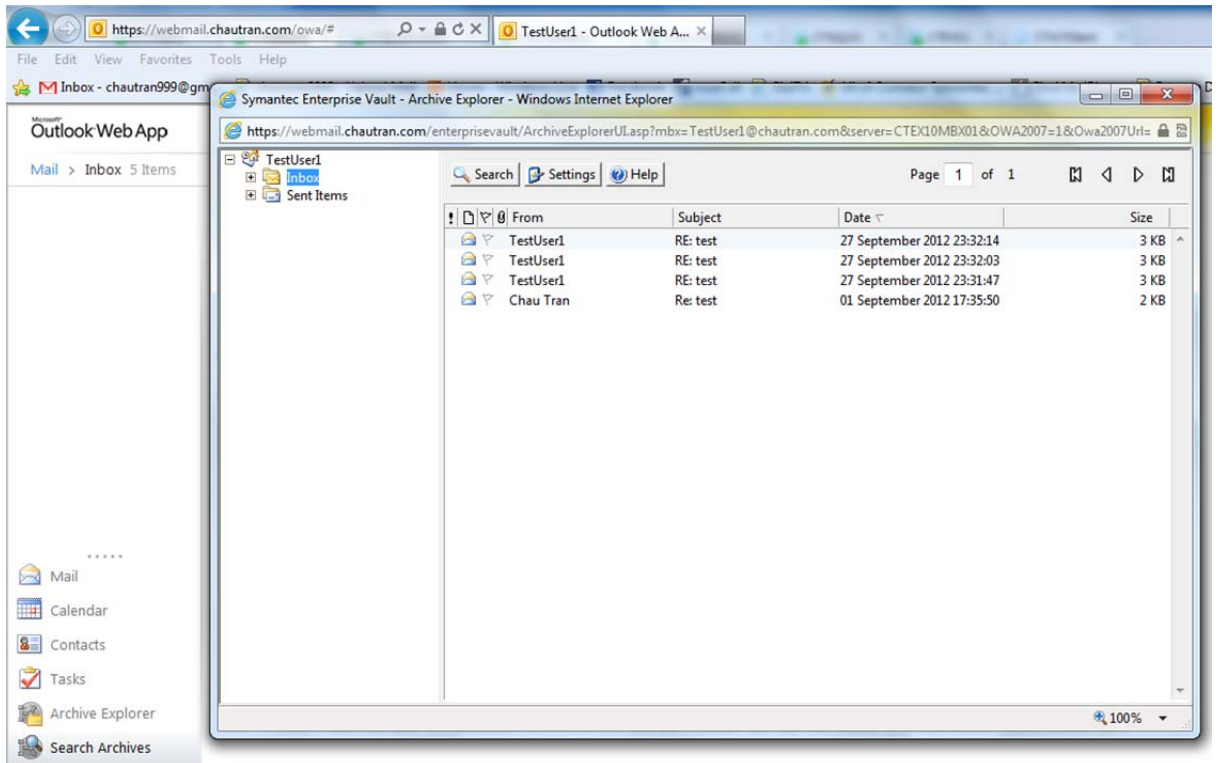
Click on Find Now and it should return results:



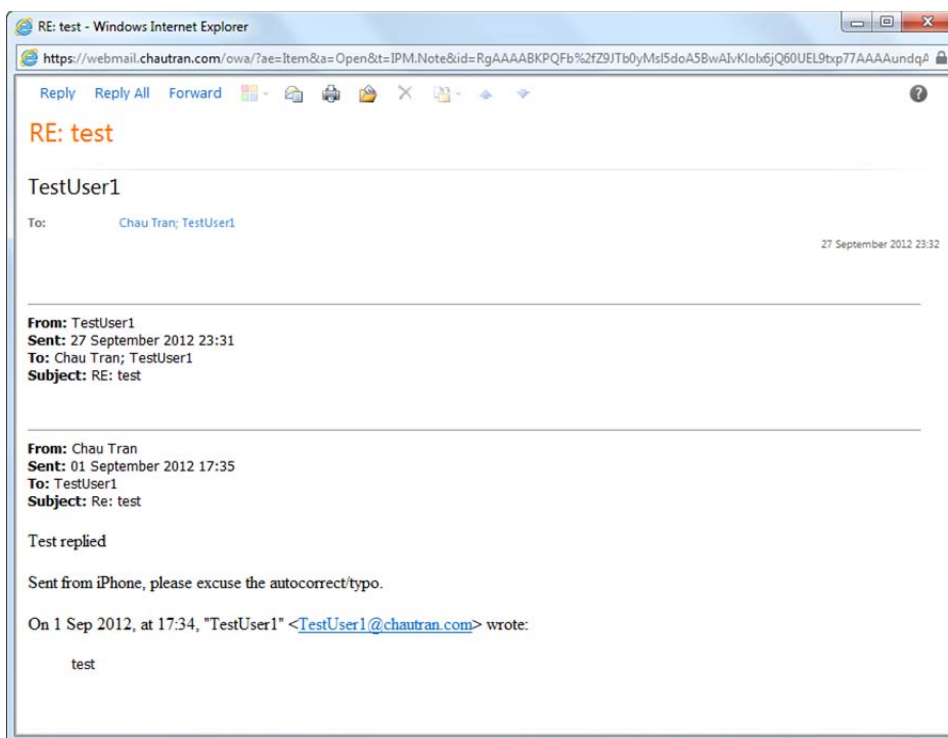
Click on one of the results to retrieve the archived message



Archive Explorer:



Double click on one of the messages to retrieve



Disclaimer:

The instructions above were performed in my test environment and it's working for me, it may or may not work in your environment therefore, you should only use this as a guide and you are using it at your own risk. You should always perform such setup in your test environment first before applying to your production environment. For such official configuration and setup, contact your Microsoft or/and Symantec Technical Support.