

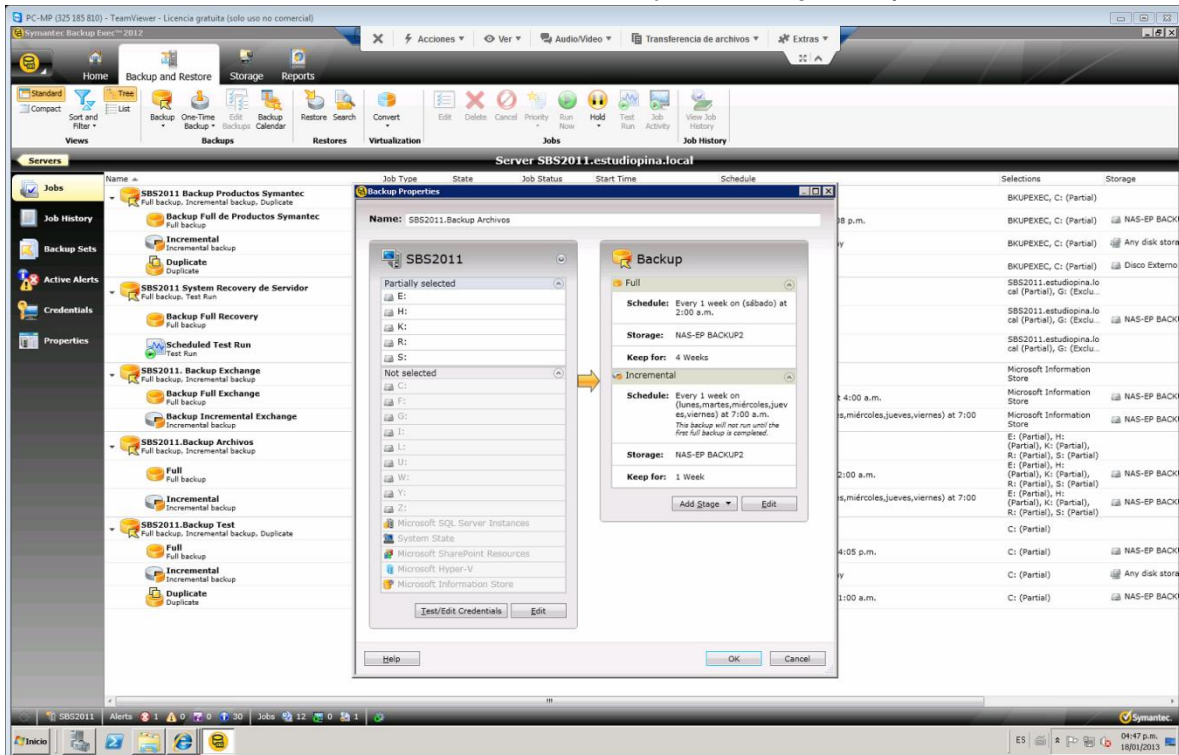
I have a problem when running these scheduled tasks in one of our customers.

The atmosphere is composed of a single server Windows SBS 2011 Standard, with Backup Exec 2012 SBS STD with a lomega NAS connected.

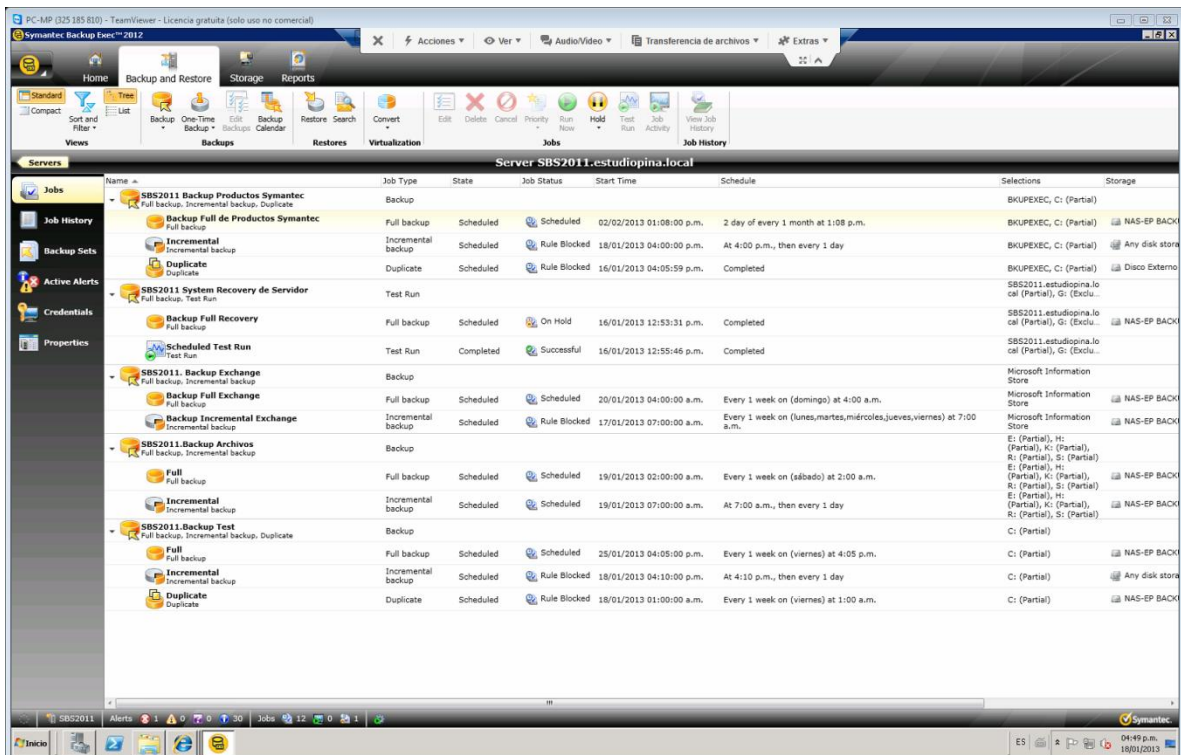
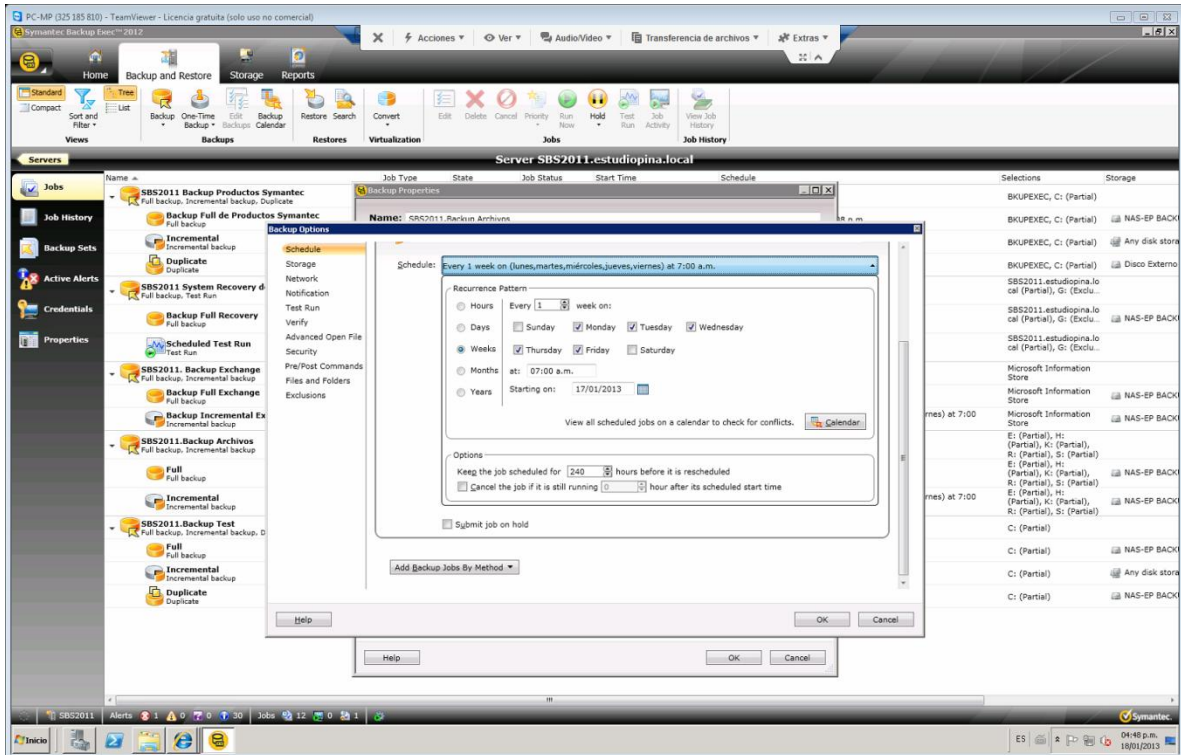
Tasks were scheduled backup to run a FULL WEEKLY (Sundays, for example) at 11 AM. AND planned DAILY INCREMENTAL tasks that run in the morning of each day.

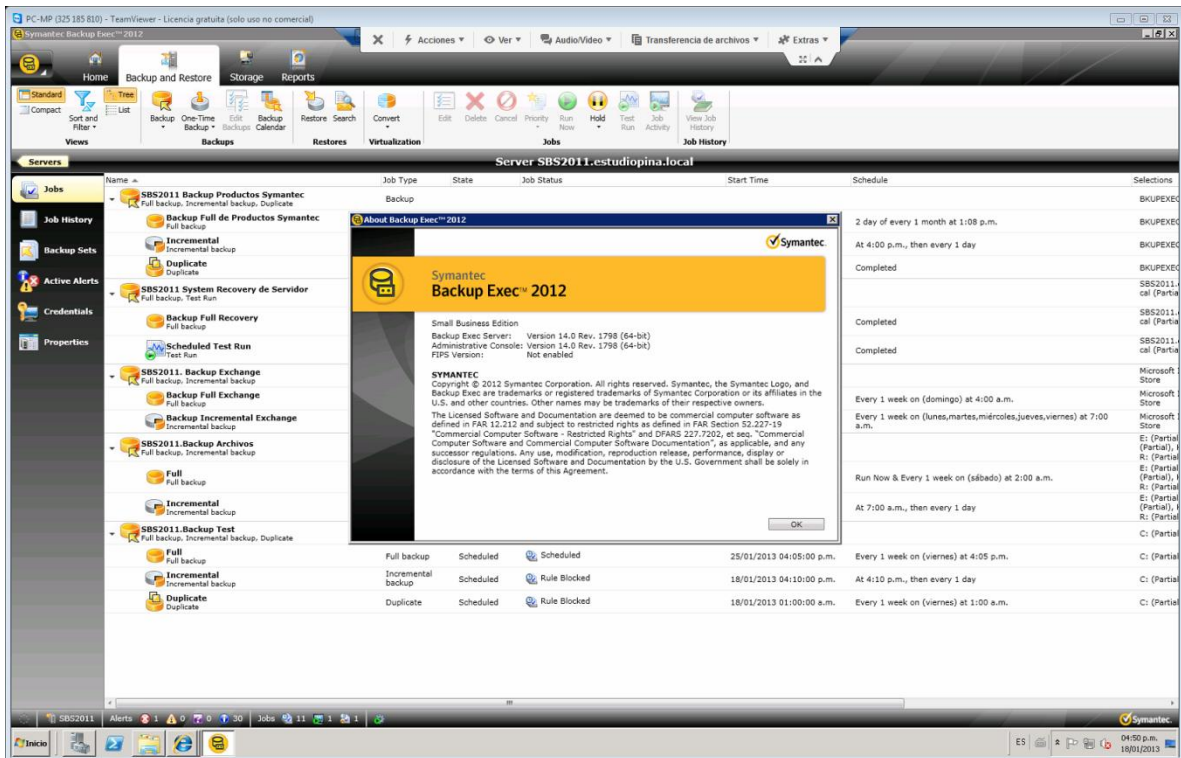
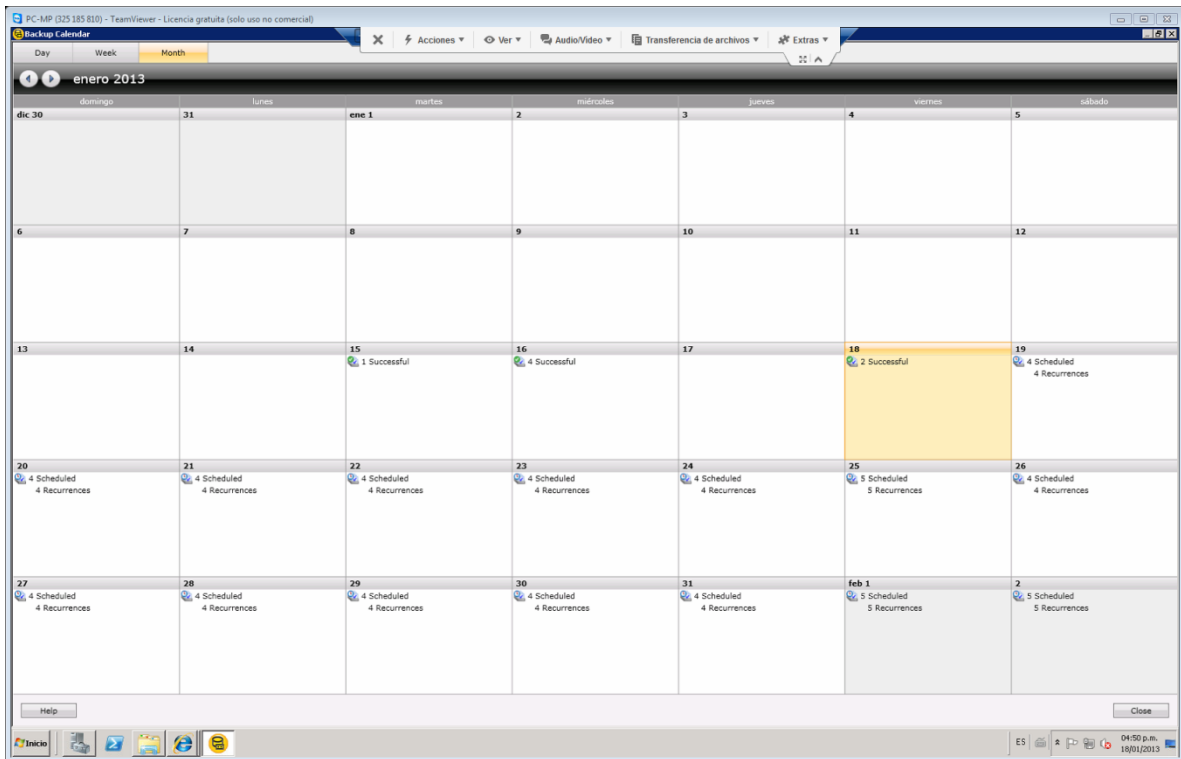
The tasks FULL were implemented sucesful, but the incremental were not executed, no errors are shown in the alerts or LOGS JOBS is only displayed in state "Rule Blocked".

The problem is detected in this job. A job file, which the Job FULL runs without problem. But sensed the note of the Scheduled Job Incremental (This backup will...)



Tasks were scheduled backup to run a FULL WEEKLY (Sundays, for example) at 11 AM. AND planned DAILY INCREMENTAL tasks that run in the morning of each day.





Within several Post from Symantec/Connect detected that may be an error in how the rules of errors. Are you disabled all the options, and restarted the services. Disabled all the Error-Handling Rules, restarted the services of Backup Exec, but the problem persists.

