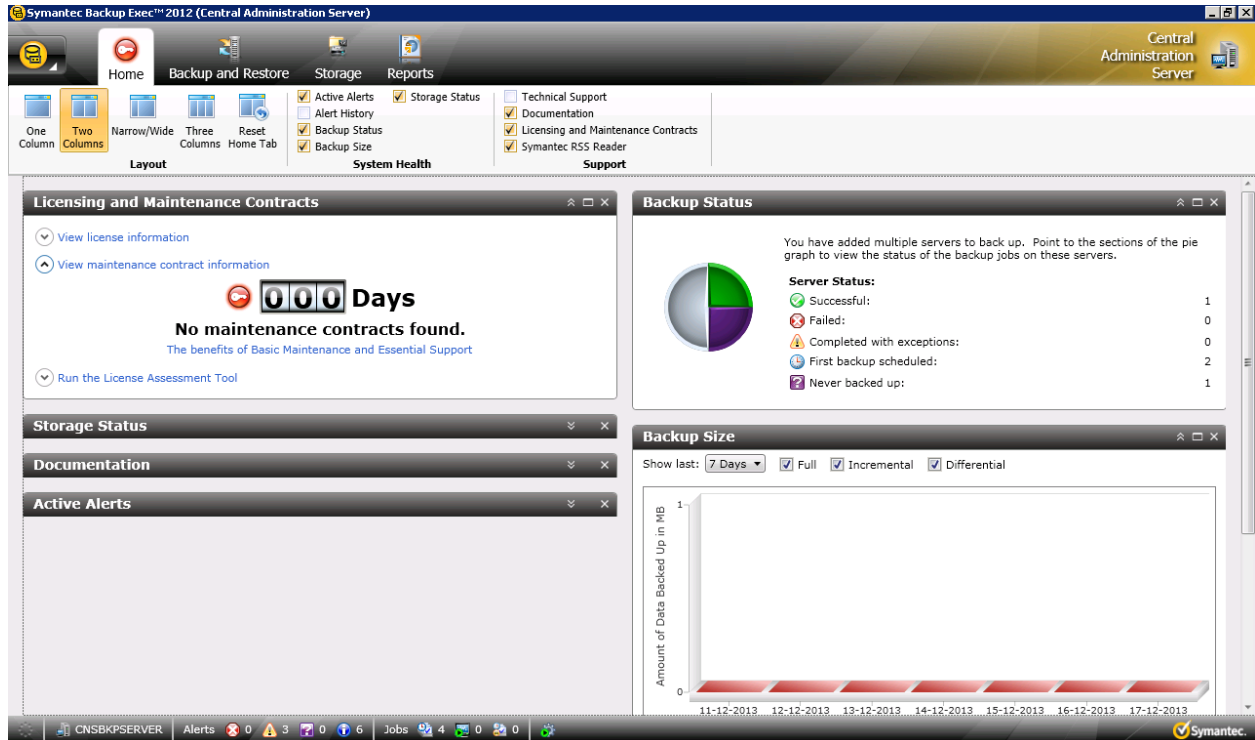


Home Page



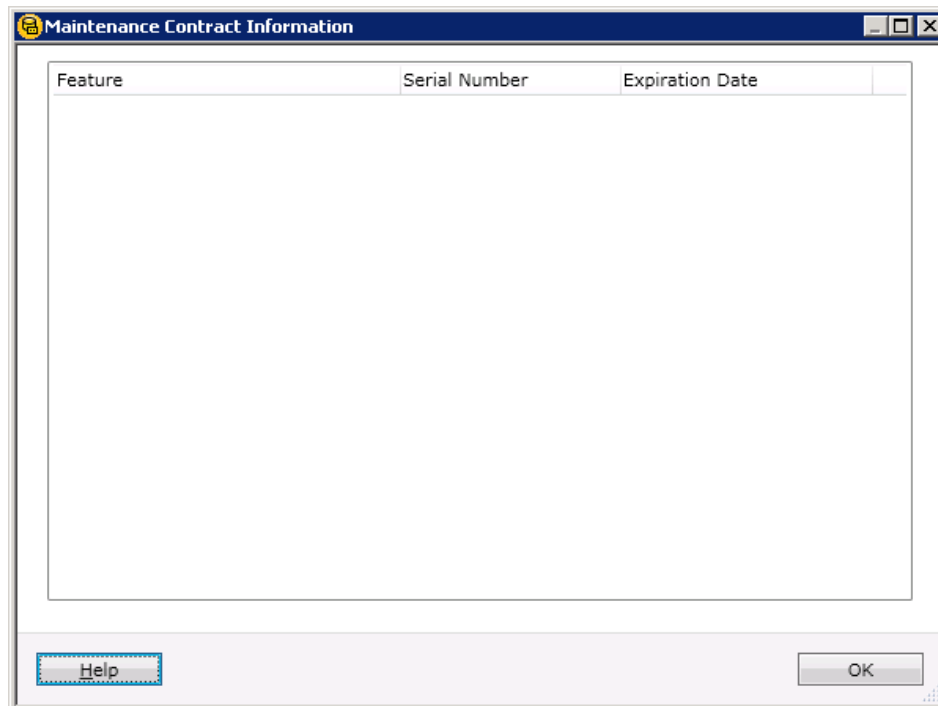
The screenshot shows the Symantec Backup Exec 2012 Central Administration Server Home Page. The interface includes a top navigation bar with tabs for Home, Backup and Restore, Storage, and Reports. Below this is a layout section with icons for One Column, Two Columns, Narrow/Wide, Three Columns, and Reset Home Tab. The main content area is divided into several sections:

- Licensing and Maintenance Contracts:** Displays a message "No maintenance contracts found." with a "0000 Days" counter and links to view license information, view maintenance contract information, and run the License Assessment Tool.
- Storage Status:** A section with a dropdown menu.
- Documentation:** A section with a dropdown menu.
- Active Alerts:** A section with a dropdown menu.
- Backup Status:** A section with a pie chart and a table showing server status.
- Backup Size:** A section with a bar chart showing the amount of data backed up in MB over time.

The bottom status bar shows the server name "CNSBKPSERVER", alerts (0), jobs (4), and the Symantec logo.

Server Status	Count
Successful	1
Failed	0
Completed with exceptions	0
First backup scheduled	2
Never backed up	1

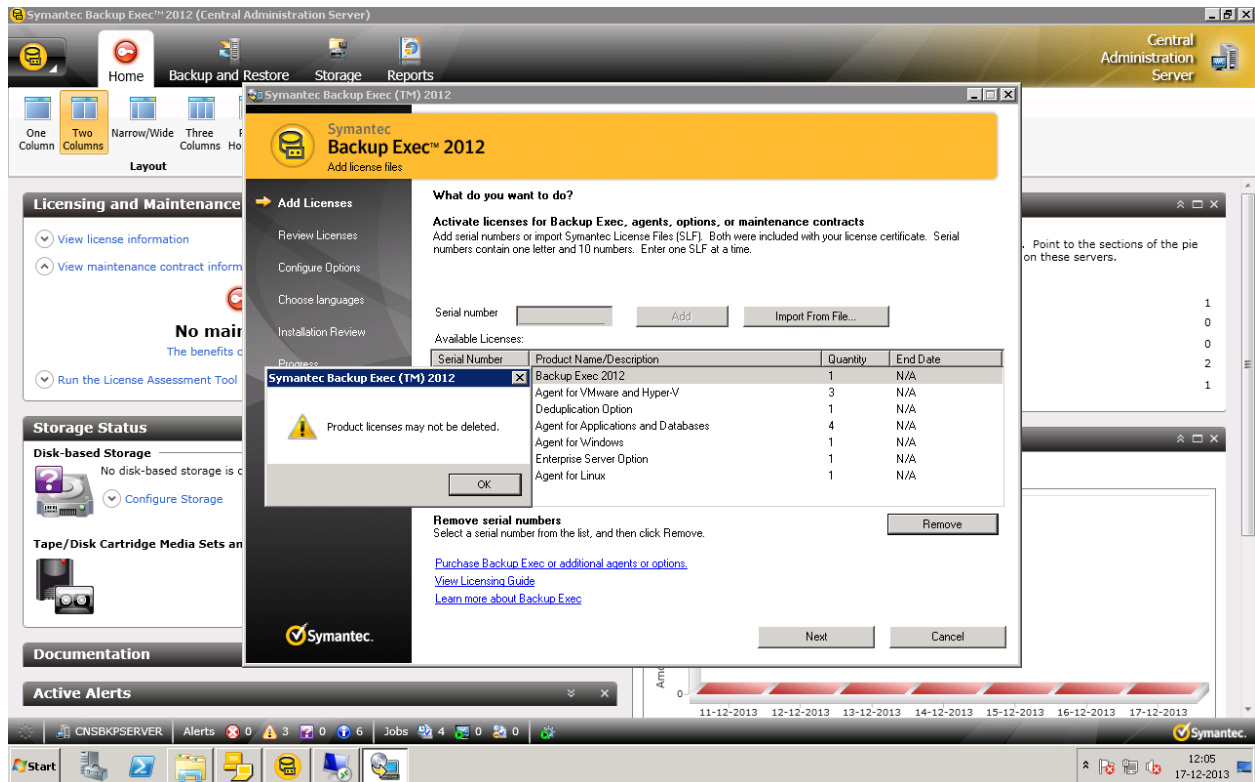
Date	Amount of Data Backed Up in MB
11-12-2013	0
12-12-2013	0
13-12-2013	0
14-12-2013	0
15-12-2013	0
16-12-2013	0
17-12-2013	0



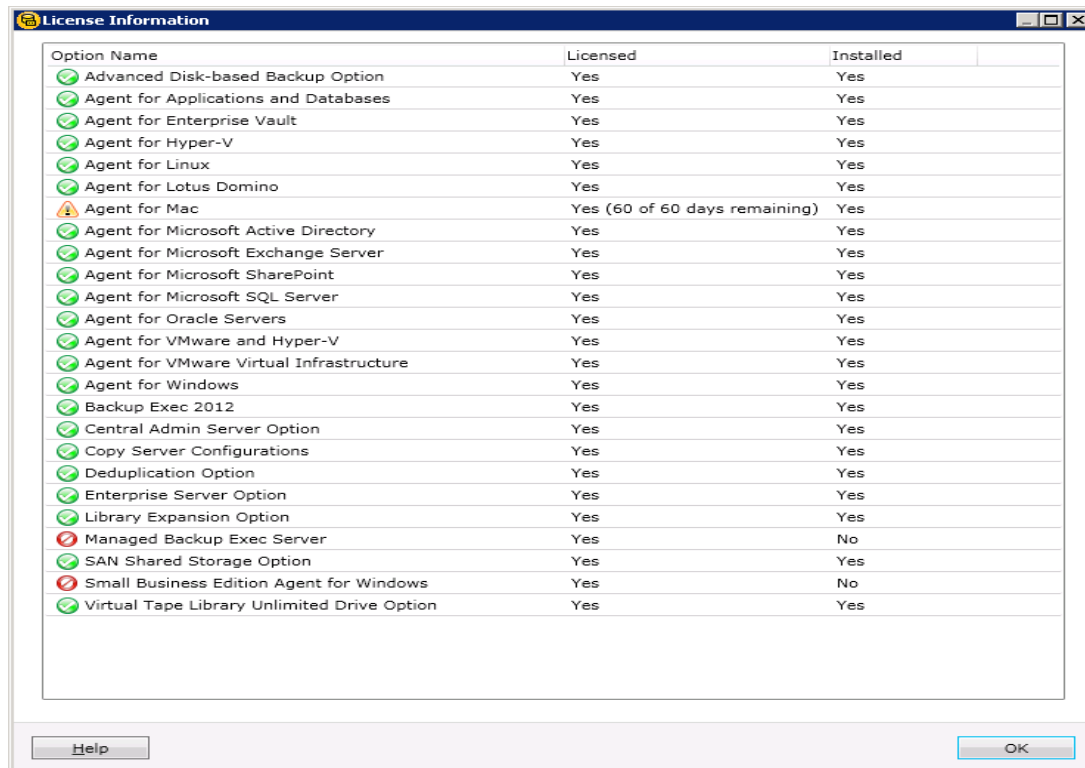
The screenshot shows a "Maintenance Contract Information" dialog box. It contains a table with three columns: Feature, Serial Number, and Expiration Date. The table is currently empty. At the bottom of the dialog, there are "Help" and "OK" buttons.

Feature	Serial Number	Expiration Date
---------	---------------	-----------------

Install options and License on this Backup Exec Server screenshot



I'm Trying to remove the license and getting the above message



Maintenance Contract

Maintenance Contract Customer Numbers

You can keep track of the customer numbers from your maintenance contracts.

Customer Numbers:

Customer Number	Notes
-----------------	-------

New

Delete

Help **Close**