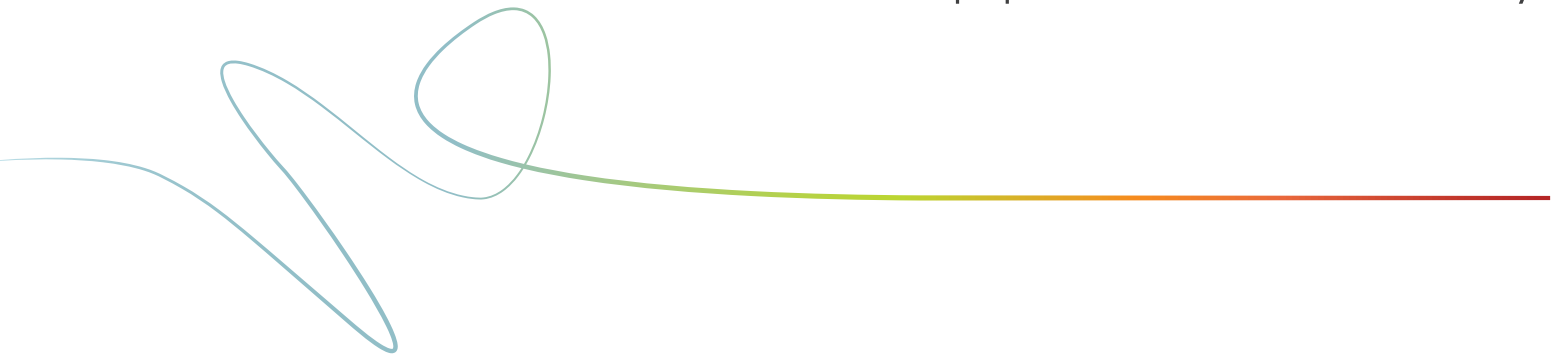


Overview Brochure

# Veritas NetBackup™ Appliance Family



**VERITAS™**

The truth in information.

## VERITAS NETBACKUP™ APPLIANCES

Veritas understands the shifting needs of the data center and offers NetBackup Appliances as a way for customers to simplify deployment and maintenance of the market-leading NetBackup software<sup>1</sup>.

Eliminate the time and effort of installing, configuring, and maintaining your backup and disaster recovery hardware and software components with Veritas NetBackup Appliances.

When it's time to upgrade or expand the backup or disaster recovery hardware infrastructure, many customers follow a traditional path to acquire, build, and integrate their own servers and storage; or look to point products. It is a reflex that is well known, but also one with hidden productivity costs.

In addition, many customers find themselves with multiple backup products in their environment. What started as a good idea with a single point product has evolved to multiple, disparate point products, including dedupe storage silos. This has resulted in increases in both cost and complexity. Veritas NetBackup Appliances enable consolidation of separate physical or virtual data protection products; and tape, disk or virtual tape libraries (VTL), into a single, unified data protection platform.

NetBackup Appliances are ideal for customers looking for turnkey solutions for their organization. The appliances enable efficient, storage-optimized data protection for the data center, remote offices and virtual environments. Built on the strength of Veritas NetBackup software, these enterprise-class appliances are the leaders in the integrated purpose built backup appliance (PBBA) market<sup>2</sup> offering both lower Total Cost of Ownership and higher levels of reliability.



## WHY AN INTEGRATED APPLIANCE?

IDC has defined Purpose-Built Backup Appliance (PBBA) into two (2) different types<sup>3</sup>, target systems and integrated systems:

- **Target systems** are used in conjunction with third-party backup software and designed to integrate in heterogeneous environments.
- **Integrated systems** are tightly integrated with backup software to orchestrate the backup and movement of data.

When comparing target versus integrated systems, implementing an integrated appliance for backup and recovery can be a better solution for customers wanting to simplify IT tasks, increase productivity, and reduce operating and capital expenditure costs.

"Integrated PBBA solutions are highly tuned and provide customers a truly turnkey, simplified way to solve their backup and recovery challenges."<sup>4</sup>

— IDC

## WHY NETBACKUP APPLIANCES?

- **Industry-leading NetBackup software**—Pre-installed with NetBackup software to provide a comprehensive and integrated backup and storage solution for customers.
- **Scalable Architecture**— A flexible and scalable architecture enables NetBackup Appliances to be deployed as an all-in-one backup server with intelligent end-to-end deduplication or in a configuration of multiple appliances (media servers) that can move hundreds of TB of data per day.
- **Ultimate virtual machine protection**—Built-in support for VMware vSphere™ and Microsoft Hyper-V®. Unlike some other solutions, the NetBackup Appliances deliver off-host backups with no requirement for proxy servers thereby eliminating associated complexity, cost and resource overhead.
- **Intelligent End-to-End Deduplication**— NetBackup integrated appliances are the only single-vendor enterprise backup appliances that provide end-to-end deduplication—both source and target side.

NetBackup integrated appliances enable you to easily build and deploy your organization's backup and deduplication strategy for effective information management. Leverage this simple solution in your NetBackup environment to maximize IT staff time, operations and storage investment.

## THE BUSINESS VALUE OF INTEGRATED APPLIANCES

- **One Integrated Solution**—Hardware, software, and support are all managed by Veritas. You won't need to unbox, load, install, test, manage, and support multiple solution elements such as a server, storage, operating system, backup software, and network connectivity. There's also no need to integrate with solutions from other suppliers. Equally important, both source and target deduplication is provided by one integrated solution. Veritas provides end-to-end technical support for the appliance. There is one phone number to call if you need assistance.
- **Cost Efficient**—NetBackup Appliances can deliver immediate CapEx savings by consolidating multiple backup solutions with one platform, reducing the use of tape for backup and disaster recovery, and delaying or avoiding additional hardware purchases. Since common administrative tasks associated with installing, configuring, and supporting target dedupe storage system are eliminated, immediate and long-term OpEx savings can be realized. Finally, Veritas licenses the use of the appliances with a perpetual front-end capacity based licensing model. This approach can not only reduce the total cost of ownership when compared to other hardware-based deduplication appliances, but also provides customers with investment protection as their software licenses are transferable to either supported hardware platforms or future appliances.

"The IPCC environment is very large, covering four regions of nearly 11,000 seats. Veritas NetBackup Appliances help us minimize costs because they support source or target deduplication, and also let users choose inline or post deduplication. This flexibility maximizes IPCC backup storage capacity utilization, significantly reducing costs by eliminating the necessity of point products such as target-based deduplication appliances, tape, or a VTL (Virtual Tape Library)."

— Seung Man Yang,  
KT Customer Service Center Operation Team  
Senior Manager, KT

"We absolutely wanted the backup appliance model because we can deploy it in less than a day. A traditional solution of separate backup software, server, and storage would take far longer and would not be practical for us."

— Richard Morris,  
Solution Line Manager, Colt Technologies

- **Simple to Manage**—For existing NetBackup customers, there is no new interface to learn, the appliance delivers the familiar NetBackup administration console. Day-to-day monitoring of the appliance hardware requires minimal intervention from you which may also reduce operational costs. Veritas AutoSupport automatically monitors key hardware components such as disks, memory, power supplies, and fans, and will open a support ticket and contact the customer in the event of a detected hardware problem. All hardware and software patches as well as software upgrades are controlled by Veritas and can be deployed in a few simple steps.

- **Fast Performance and Scalability**—For existing NetBackup customers, NetBackup Appliances have high backup and recovery performance via distinctive multidimensional scalability, and performance can be scaled to run tens of thousands of backup jobs per day (with multiple appliances). The ability to distribute both backup and deduplication processing to multiple media servers and clients and unique technologies like Veritas NetBackup™ Accelerator enable organizations to meet their service level agreements.
- **Flexible**—NetBackup Appliances are compatible with existing software and can be mixed into an existing environment. No complex or disruptive migration process or time-consuming retraining is needed. The appliance supports source based and target-based deduplication, in-line or post-process deduplication, and virtual and physical environments.

"With NetBackup, I'm now able to worry less about what's going on in my environment now that we have the appliances allowing me to concentrate more on what's in front of me."

— Eric Paczkowski,  
Veritas NetBackup Administrator,  
Rent-A-Center

Thousands of Veritas NetBackup customers have already embraced the value of our integrated backup appliances. With tens of thousands of appliances deployed in more than 60 countries, our approach to improving the end-to-end process for backup and recovery is making a positive impact on many organizations.

## THE NETBACKUP INTEGRATED APPLIANCE FAMILY

Veritas' NetBackup integrated appliance family consists of two series:

**NetBackup 5200 series**—A versatile integrated backup appliance that can be deployed as a master server, or media server, or both, for a NetBackup domain. As an appliance it simplifies and offers OpEx savings over traditional build-your-own media servers.

### Key Features

- **Suitable for environments of any size**— Starting at 4TB and expandable up to 294TB of useable capacity, it is ideal for remote offices, regional offices and enterprise data centers.
- **Multiple functional roles**—Can be deployed as master server, media server or both for a NetBackup environment.
- **Comprehensive**—Backup solution with built-in deduplication. Veritas provides the software, hardware, services and support.
- **Intelligent end-to-end deduplication**—Reduces the size of backups by up to 50 times and network bandwidth utilization by up to 99 percent, so you can backup and replicate faster.
- **Flexible deduplication options**—Deduplication at source, media server, or target; inline or post-process.

**NetBackup 5300 series**—High availability enterprise backup up appliances with storage to support greater performance, capacity, and resiliency requirements.

### Key Features

- **Scalable capacity**—Starting at 229TB and expandable to 1.92PB, 5300 series appliances are for larger enterprises, data centers, and disaster recovery sites.
- **High Availability**—HA configurations increase system reliability, provide higher backup and recovery throughput and higher operational availability at significantly lower operational costs.
- **Resiliency**—Enhanced system protection, deduplication pool, and storage. Enterprise-class hardware includes redundant hot swap components; RAID and disk controllers, power supplies, fan modules, and disks.
- **Greater density**—Delivers more TB per rack unit (RU) which reduces floor spacerequirements and lowers power and cooling costs.

## SAVE WITH NETBACKUP INTEGRATED APPLIANCES

### Key NetBackup appliance OPEX savings

- **Acquisition**—Eliminate ordering, approvals, scheduling, and delivery of separate media server components.
- **Installation and Integration**—Remove the hassle of installation, integration, testing, and performance tuning.
- **Administration**—Use one management console to perform multiple tasks.
- **Patching and Firmware Updates**—Reduce compatibility issues by no longer managing all the components for revision levels, firmware, and more.
- **Support**—Eliminate finger pointing among different component vendors if an issue occurs.

### Key NetBackup appliance CAPEX savings

- **Storage**—Reduce storage cost by replacing tape with Veritas intelligent deduplication.
- **Space**—Save valuable floor space by combining both the backup server and deduplication storage into one appliance.
- **Power and Cooling**—As ENERGY STAR® compliant backup appliances, the NetBackup 5240, 5330 and 5340 reduce floor space and power consumption, letting you to do more with your IT budget.

## VERITAS NETBACKUP™ COPILOT FOR ORACLE® FOR DATABASE ADMINISTRATORS

Allows database administrators (DBAs) to maintain control over primary backup and recovery operations, using native Oracle® tools like RMAN, while secondary operations and policies such as de-duplication, replication and cataloging are managed by NetBackup administrators.

- Easy coordination between the DBA and backup admin
- Faster backup and recovery of Oracle databases
- Reduced storage costs and impacts to production environment

## NETBACKUP VIRTUAL APPLIANCES

Veritas NetBackup Virtual Appliances deliver unified data protection and seamless hypervisor integration into existing virtual environments. Built on NetBackup software, these virtual appliances provide deduplication of data at the source and reduction in network bandwidth utilization up to 99 percent. View the [NetBackup Virtual Appliance](#) datasheet to learn more.

## NETBACKUP INTEGRATED APPLIANCES



	NETBACKUP 5240			NETBACKUP 5330	NETBACKUP 5340
Use Cases	Media Server	Master/Media Server: Minimum Configuration	Master/Media Server: With Storage Shelves	Media Server	Media Server
Usable Capacity (TB)	4TB	4TB, 14TB or 27TB	53TB-294TB	229TB-1.37PB	120TB-1.92PB
Media Server Deduplication Pool (MSDP) Capacity	4TB	Up to 27TB	Up to 294TB	916TB	916TB
Random Access Memory	64GB	64GB	128GB	384GB	768GB
	Upgradable to 128 or 192 GB	Upgradable to 128 or 192 GB			
High Availability (HA)	No	No	No	Yes	Yes
Concurrent Backup Jobs @ 98% dedupe <sup>6</sup>	192 With HA: Not Available			600 With HA: 1080	900 With HA: 1440
<b>EXPANSION SHELF</b>					
Usable Capacity	49TB			229TB	120, 240, 480TB

Refer to respective product data sheets for additional Technical and Environmental Specifications.

Footnotes:

1. Gartner: Magic Quadrant for Data Center Backup and Recovery Solutions, Publication Date 31 July 2017
2. IDC Worldwide Quarterly Purpose Built Backup Appliance Tracker - 2017 Q2, Publication Date 9/21/2017
3. 2017 Q2 Historical IDC Quarterly Purpose Built Backup Appliance Tracker, Publication Date 9/21/2017
4. IDC White Paper, The Evolution and Value of Purpose-Built Backup Appliances, #239730, Robert Amatruda, March 2013.
5. Integrated Swiss Army Knife: Six use cases for data protection appliances, CIO Digest, April 2013.
6. Greater stream counts may be achieved based on total data I/O. Client dedupe and acceleration contribute to higher stream count availability as they lower total data I/O. In addition, there are no hard coded stream count limitations.

---

## ABOUT VERITAS TECHNOLOGIES LLC

Veritas Technologies empowers businesses of all sizes to discover the truth in information—their most important digital asset. Using the Veritas platform, customers can accelerate their digital transformation and solve pressing IT and business challenges including multi-cloud data management, data protection, storage optimization, compliance readiness and workload portability—with no cloud vendor lock-in. Eighty-six percent of Fortune 500 companies rely on Veritas today to reveal data insights that drive competitive advantage. Learn more at [www.veritas.com](http://www.veritas.com) or follow us on Twitter at [@veritastechllc](https://twitter.com/veritastechllc).

---

Veritas Technologies LLC  
500 East Middlefield Road  
Mountain View, CA 94043 USA  
+1 (866) 837 4827  
[veritas.com](http://veritas.com)

For specific country offices and contact numbers, please visit our website.  
[veritas.com/about/contact](http://veritas.com/about/contact)

**VERITAS™**  
The truth in information.

V099-3 11/17