



Welcome to the Storage Server Configuration Wizard

This wizard will guide you through the steps required to create and configure a storage server and a disk pool that will utilize the newly created storage server.

Before starting, physically deploy your disk devices and perform all configuration steps specified by the storage system vendors.

You must also ensure that any required software plug-ins are installed on the NetBackup media server(s).

NetBackup should be made aware that the disk systems are ready for use. This is done by declaring the existence of storage servers and the credentials required for access.

To begin, click Next.

For assistance, click Help.


< Back

Next >

Cancel

Help

Storage server configuration wizard [X]

Add Storage Server
Provide details to create storage server 

Select the type of disk storage to configure:

Note:

Storage attached to the NetBackup media server will be used as a target for deduplicated backups. Choose this option to initialize and set up embedded deduplication on a media server.

< Back Next > Cancel Help

Storage Server Configuration Wizard [X]

Add Storage Server
Provide details to create storage server

Storage server type:

Select media server*:

Define credentials:

User name:

Password:

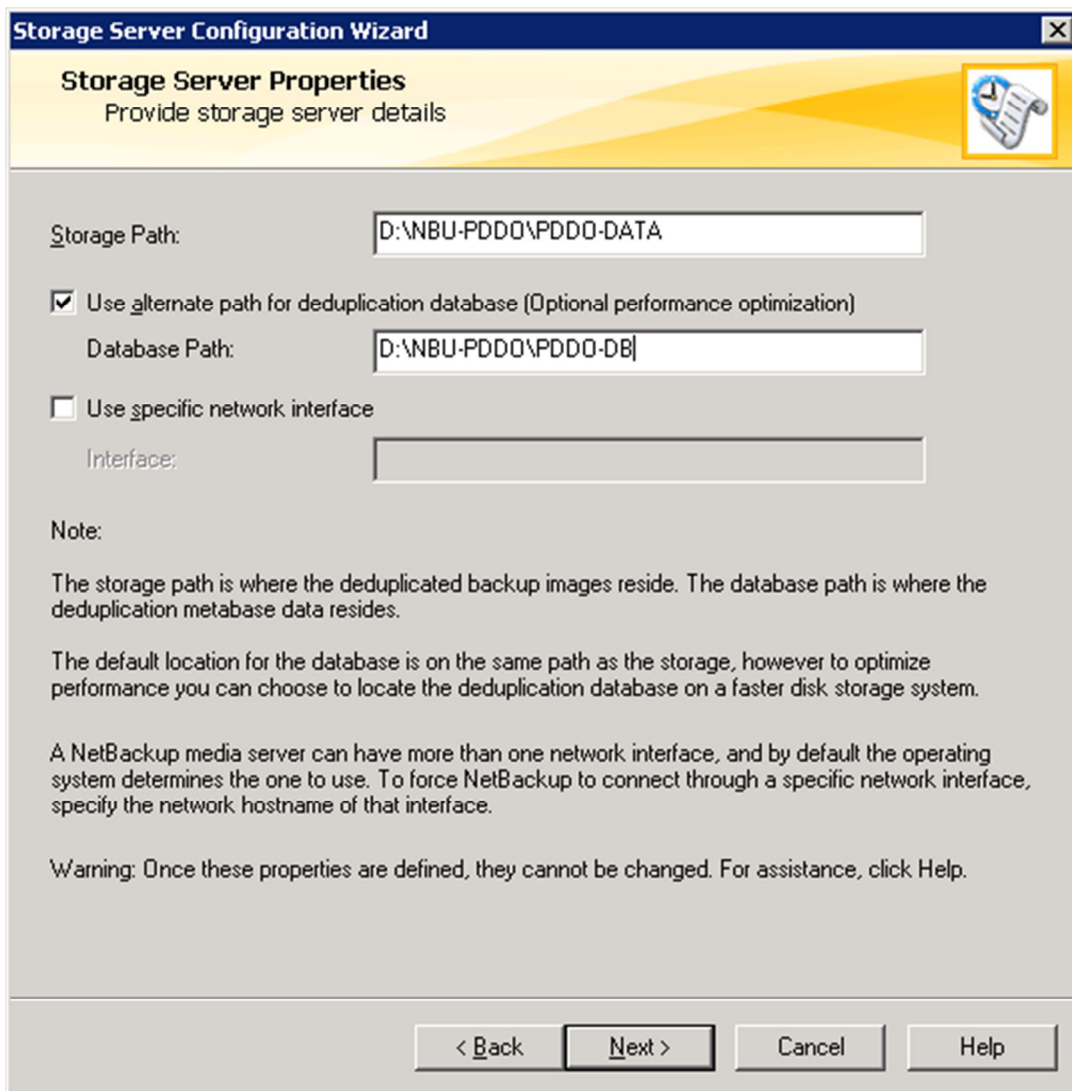
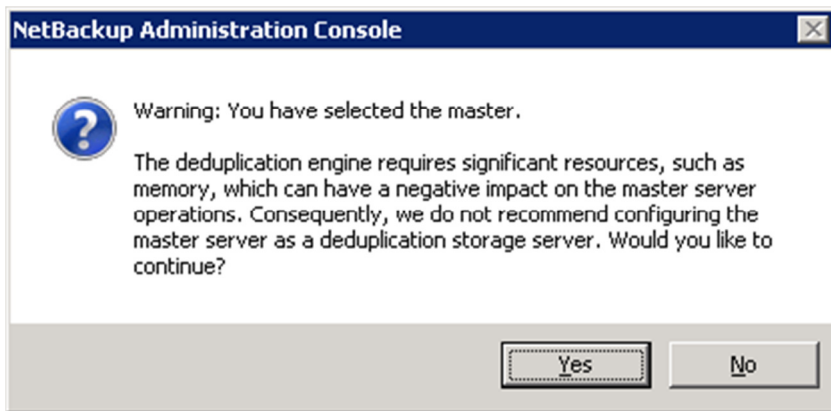
Confirm password:

* Select the media server deduplication pool

< Back Next > Cancel Help

username - admin

password - admin



Storage Server Configuration Wizard

Storage Server Configuration Summary

Selected values and defined settings



Review the summary below for the selections you made to create the storage server. Click the back button to make changes if any information is incorrect.

Storage server type:	Media Server Deduplication Pool
Storage server name:	ap-pun-svbkp03
User name:	admin
Storage path:	D:\NBU-PDDO\PDDO-DATA
Database path:	D:\NBU-PDDO\PDDO-DB
Network interface:	Use Default

To begin configuring the storage server, click Next.

< Back

Next >

Cancel

Help

Storage Server Configuration Wizard

Please wait while the wizard completes the following tasks:

Status	Performing task...	Details
✓	Creating storage server ap-pun-svbkp03...	
✓	Adding credentials for server ap-pun-svbkp03...	
✓	Configuring media server deduplication pool ap-p...	



< Back **Next >** Cancel Help

Storage Server Configuration Wizard



Add Storage Server

Provide details to create storage server



Storage server "ap-pun-svbkp03" successfully created.

Click 'Close' to finish and close the wizard.

Click 'Next' to continue the wizard for Disk Pool creation.

< Back

Next >

Close

Help



Welcome to the Disk Pool Configuration Wizard

This wizard will guide you through the steps required to create a disk pool and a storage unit that will utilize the newly created disk pool.

Before starting, physically deploy your disk devices and perform all configuration steps specified by the storage system vendors.

You must also ensure that any required software plug-ins are installed on the NetBackup media server(s).

NetBackup should be made aware that the disk systems are ready for use. This is done by declaring the existence of storage servers and the credentials required for access.

To begin, click Next.

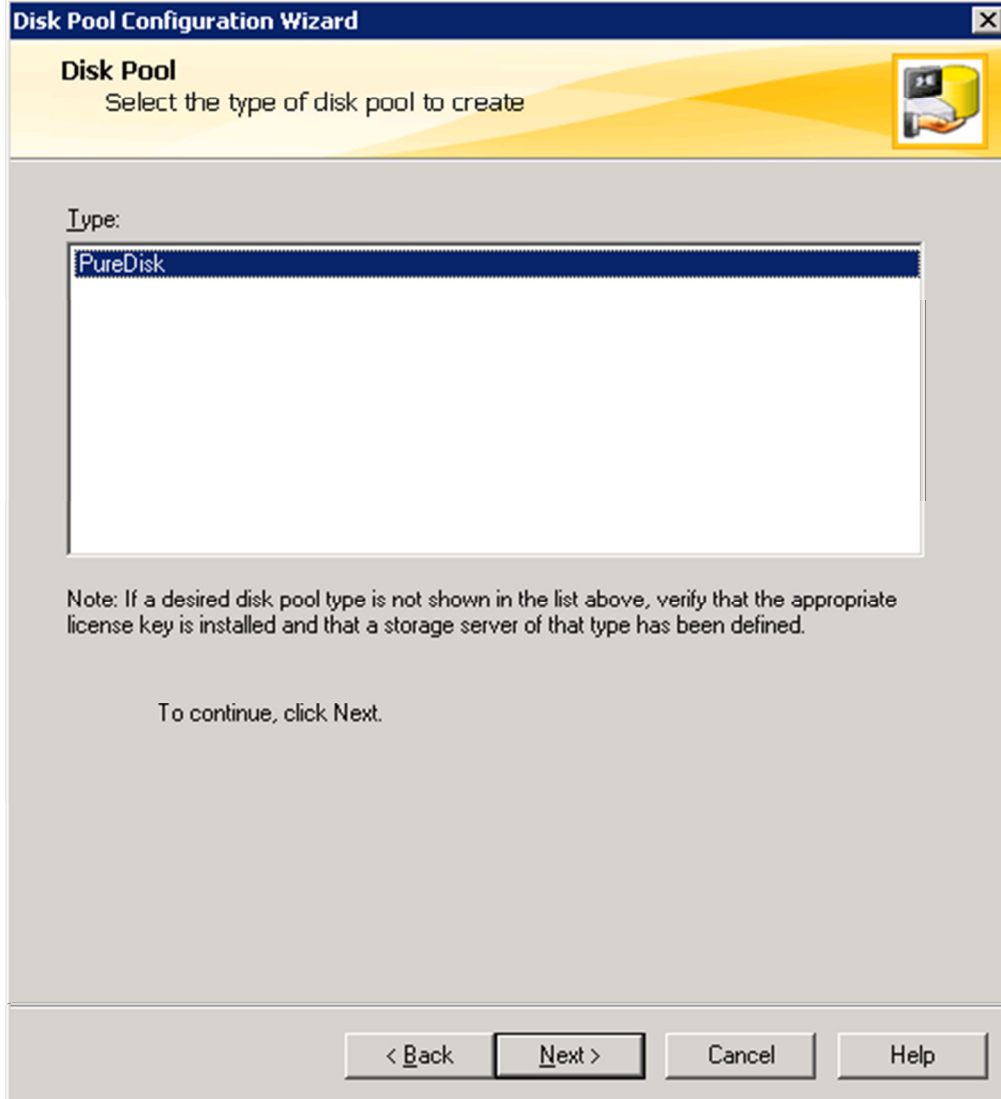
For assistance, click Help.

< Back

Next >


Cancel

Help



Disk Pool Configuration Wizard [X]

Select Storage Server
Select storage server to scan for disk volumes.



Storage server:

Name	Type
AP-PUN-SVBKP03	PureDisk


Note: If a storage server does not appear in the list, then NetBackup has not been made aware of its existence.

To continue, click next.

< Back **Next >** Cancel Help

Disk Pool Configuration Wizard [X]

Select Volumes
Select the volumes to use in the disk pool.



Storage server: AP-PUN-SVBKP03
Storage server type: PureDisk

Select volumes on the storage server to add to the disk pool.

Volume Name	Available Space	Raw Size
<input checked="" type="checkbox"/> PureDiskVolume	4.7207 TB	5.2596 TB

Total raw size: 5.2596 TB
Total available space: 4.7207 TB

< Back Next > Cancel Help

Disk Pool Configuration Wizard

Disk Pool Properties

Provide additional details and verify the information to create a disk pool.



Storage server: AP-PUN-SVBKP03

Storage server type: PureDisk

Disk Pool Size

Available space:	Raw size:
4.7207 TB	5.2596 TB

Disk Pool name:

Media-Server-PD-Pool

Comments:

For VMware deduplicated backup

Disk Volume Settings

High water mark:	Low water mark:
98 %	80 %

Maximum I/O Streams

Concurrent read and write jobs affect disk performance.
Limit I/O streams to prevent disk overload.

Limit I/O streams per volume


< Back

Next >

Cancel

Help

Disk Pool Configuration Wizard [X]

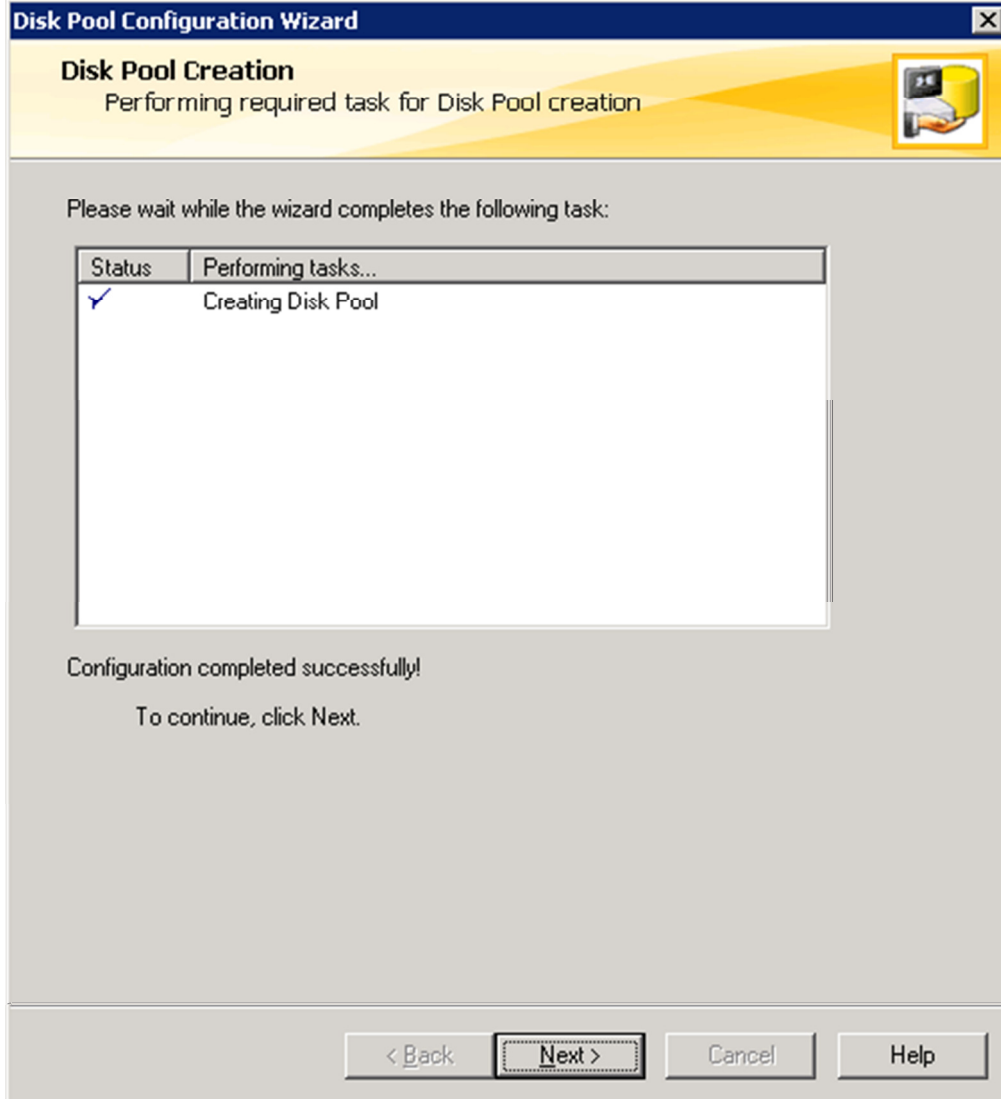
Summary
Verify Disk Pool configuration is correct 

Below is a summary of the selections you made to create the disk pool. Review the information, and if any information is incorrect, click the Back button and make appropriate changes:

Storage server name:	AP-PUN-SVBKP03
Storage server type:	PureDisk
Volumes:	PureDiskVolume;
Disk Pool Details:	
Disk Pool Name:	Media-Server-PD-Pool
High Water Mark:	98
Low Water Mark:	80
Maximum I/O streams:	Unlimited
Comments:	For VMware deduplicated back

To configure the disk pool, click Next.

< Back **Next >** Cancel Help



Disk Pool Configuration Wizard



Storage Unit creation

Choose to create a Storage Unit



The disk pool configuration is complete.

Would you like to create a Storage Unit that uses Media-Server-PD-Pool ?

Create a Storage Unit that uses Media-Server-PD-Pool

To continue, click Next.

< Back

Next >


Close

Help

Disk Pool Configuration Wizard [X]

Storage Unit Creation

Enter details to create storage unit.



Disk Pool: Media-Server-PD-Pool
Storage server type: PureDisk
Storage unit name: VMware-Dedupe-STU

Media Server:

- Use any available media server to transport data
- Use only the selected media servers:
 - ap-pun-svbkp03

Maximum concurrent jobs: 5
Maximum fragment size: 51200 MB

< Back Next > Cancel Help

Disk Pool Configuration Wizard



Finished!

You have successfully completed the NetBackup Disk Pool Configuration Wizard.

You may view or change current configuration settings within Device Management or Storage Unit Management.



To exit the wizard, click Finish.

< Back

Finish

Cancel

Help

