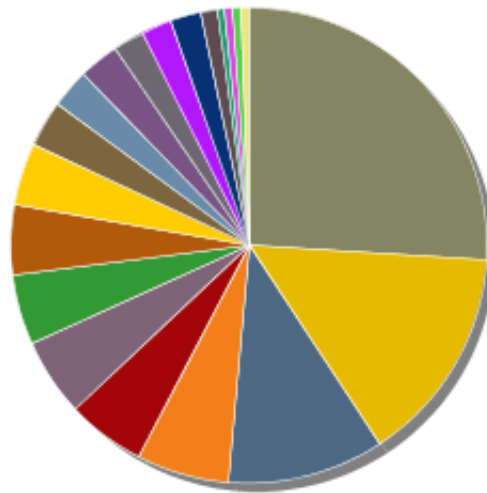


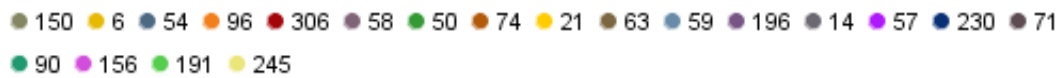
Job - Status - Detail

Report Time Frame: Previous 8 DATE

Job - Status - Detail



Total Job Count

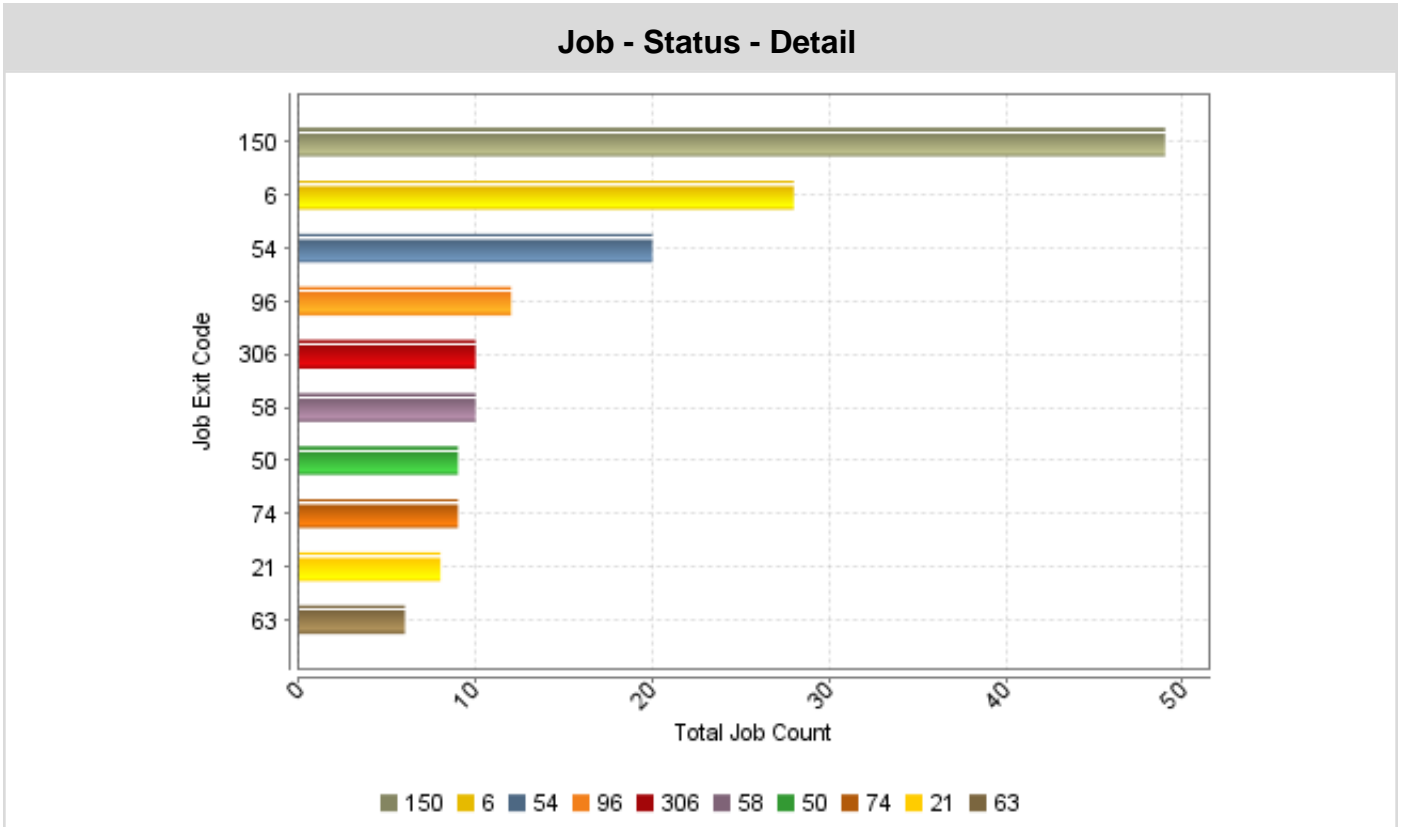


Job Exit Code	Total Job Count	Percentage
150	49	25.93%
6	28	14.81%
54	20	10.58%
96	12	6.35%
306	10	5.29%
58	10	5.29%
50	9	4.76%
74	9	4.76%
21	8	4.23%
63	6	3.17%
59	5	2.65%
196	5	2.65%
14	4	2.12%
57	4	2.12%

230	4	2.12%
71	2	1.06%
90	1	0.53%
156	1	0.53%
191	1	0.53%
245	1	0.53%

Job - Status - Detail

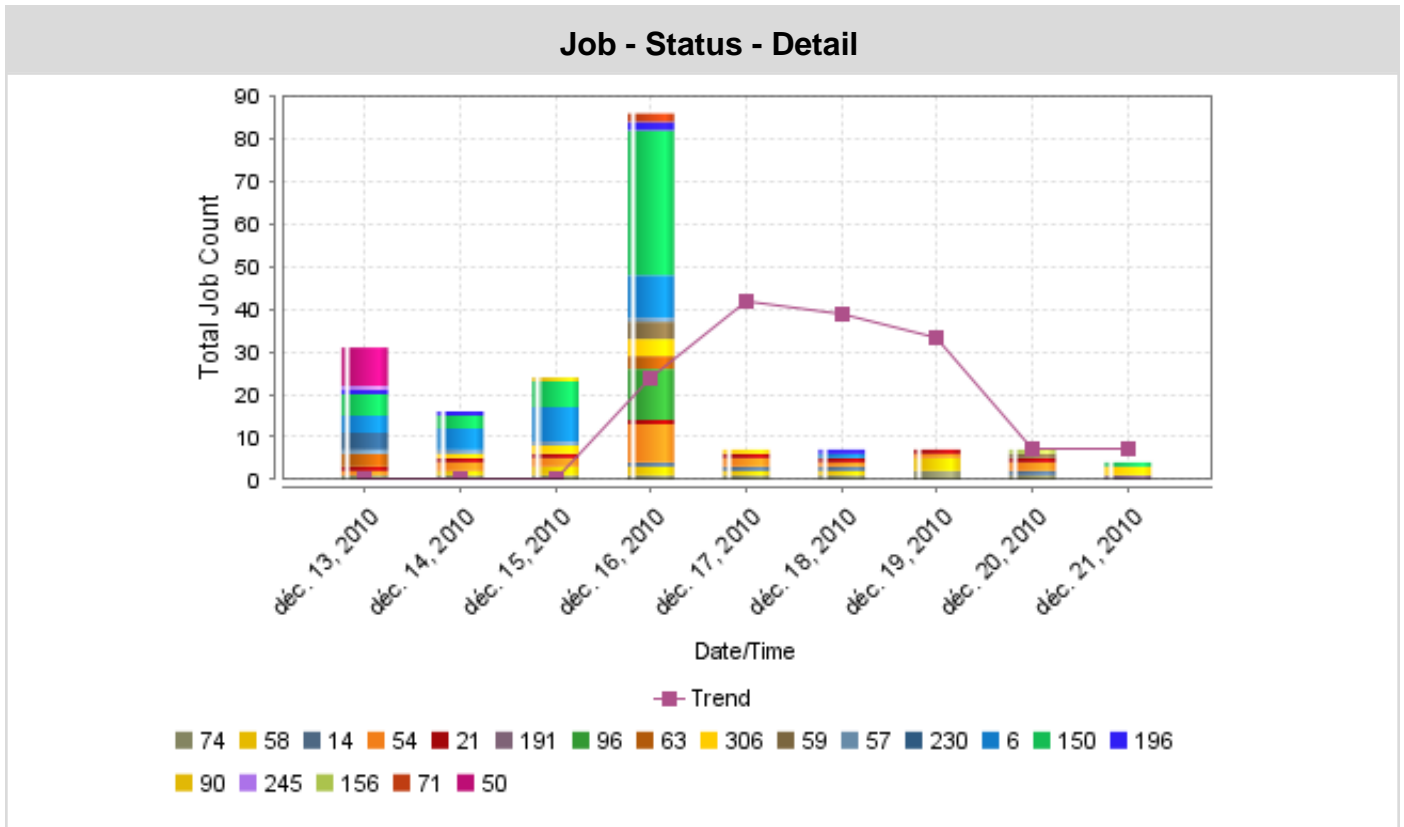
Report Time Frame: Previous 8 DATE



Job Exit Code	Total Job Count
150	49
6	28
54	20
96	12
306	10
58	10
50	9
74	9
21	8
63	6

Job - Status - Detail

Report Time Frame: Previous 8 DATE



Date/Time	Total Job Count-74	Total Job Count-58	Total Job Count-14	Total Job Count-54	Total Job Count-21	Total Job Count-	Total Job Count-96	Total Job Count-63	Total Job Count-	Total Job Count-59	Total Job Count-57	Total Job Count-	Total Job Count-6	Total Job Count-	Total Job Count-	Total Job Count-90	Total Job Count-	Total Job Count-	Total Job Count-71	Total Job Count-50	Trend
déc 13, 2010	1	0	0	1	1	0	0	3	0	0	1	4	4	5	1	0	1	0	0	9	0
déc 14, 2010	1	1	0	2	1	0	0	0	1	0	1	0	5	3	1	0	0	0	0	0	0
déc 15, 2010	1	2	0	2	1	0	0	0	2	0	1	0	8	6	0	1	0	0	0	0	0
déc 16, 2010	1	2	1	9	1	0	12	3	4	4	1	0	10	34	2	0	0	0	2	0	23.667

déc .17, 201 0	1	1	1	2	1	0	0	0	1	0	0	0	0	0	0	0	0	0	0	0	0	42
déc .18, 201 0	1	1	1	1	1	0	0	0	0	0	0	0	1	0	1	0	0	0	0	0	0	39
déc .19, 201 0	2	3	0	1	1	0	0	0	0	0	0	0	0	0	0	0	0	0	0	0	0	33. 333
déc .20, 201 0	1	0	1	2	1	0	0	0	0	1	0	0	0	0	0	0	0	0	1	0	0	7
déc .21, 201 0	0	0	0	0	0	1	0	0	2	0	0	0	0	1	0	0	0	0	0	0	0	7