

4.4 Restore

4.4.1 Virtual Server

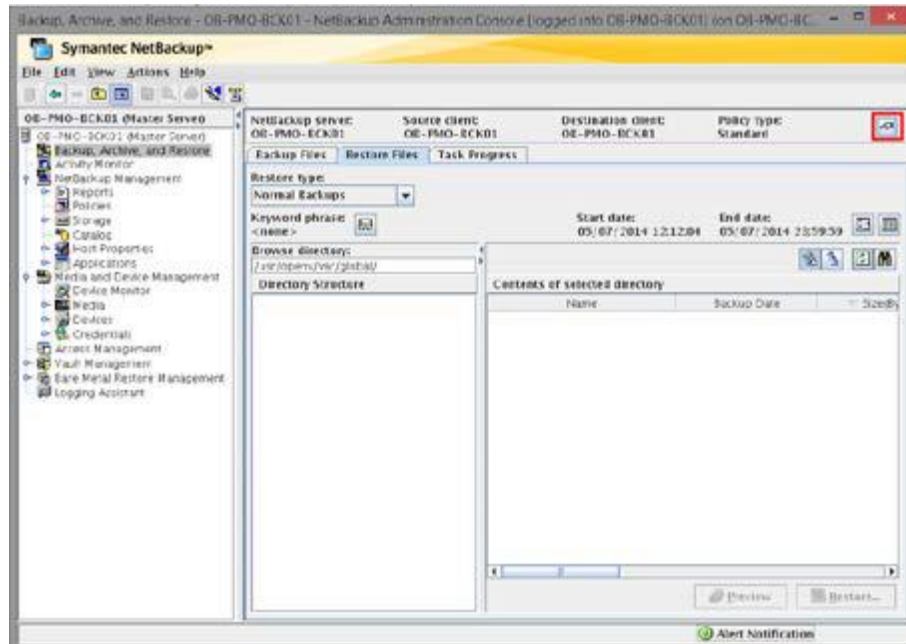


Figure 4-8 Backup, Archive and Restore

- In the NetBackup Administration Console, in the left pane, expand Backup Archive and restore.
- On the selected screen select the hand (up in the right of screen).

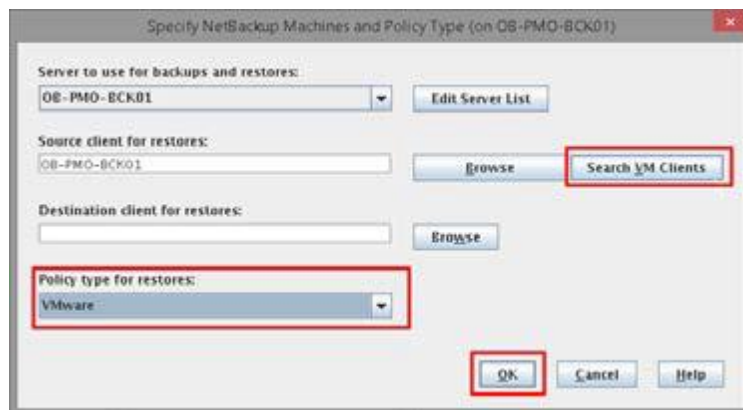


Figure 4-9 Restore: Searching VM

- Select **Search VM Client**.
- Choose VMware type of restore then **OK**

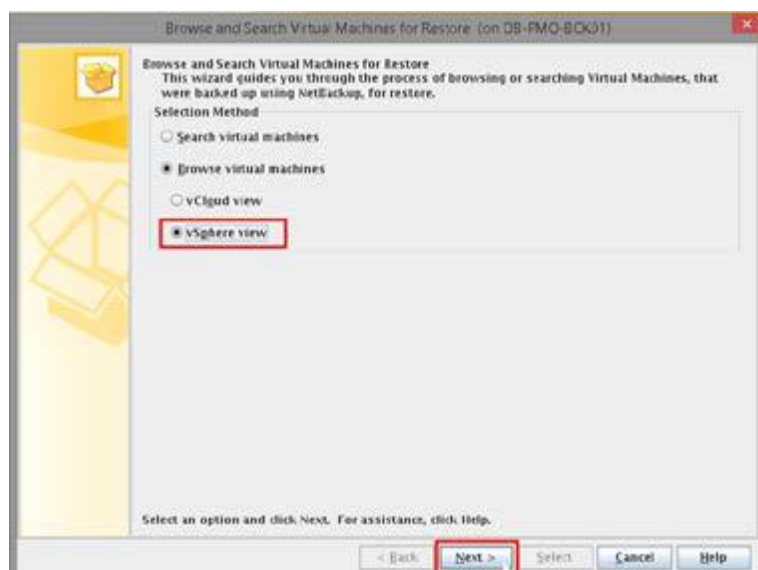


Figure 4-10 Restore: VSphere View

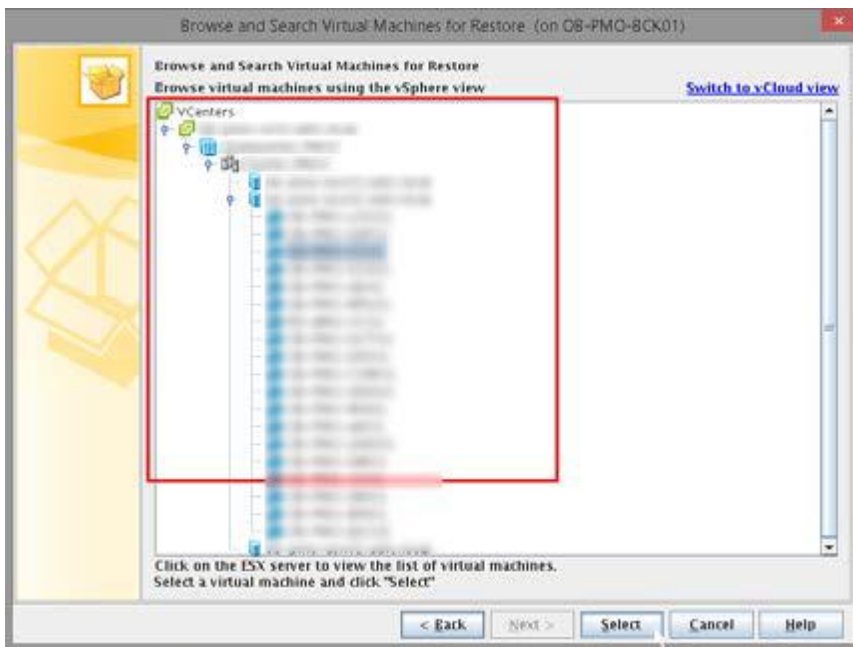


Figure 4-11 Restore: VM Selection

- Choose VM to be restored then select.

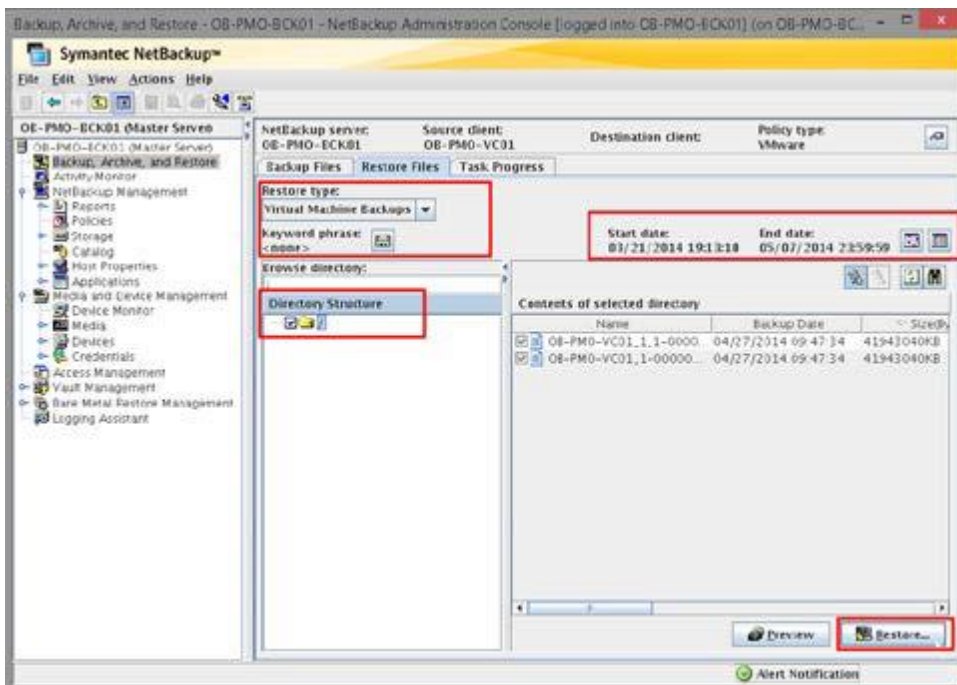


Figure 4-12 Restore: Type and Date

- Select restore type “**Virtual Machine Backup**”.
- Choose Start Date and End Date and quote Directory structure to select VM you want to restore.

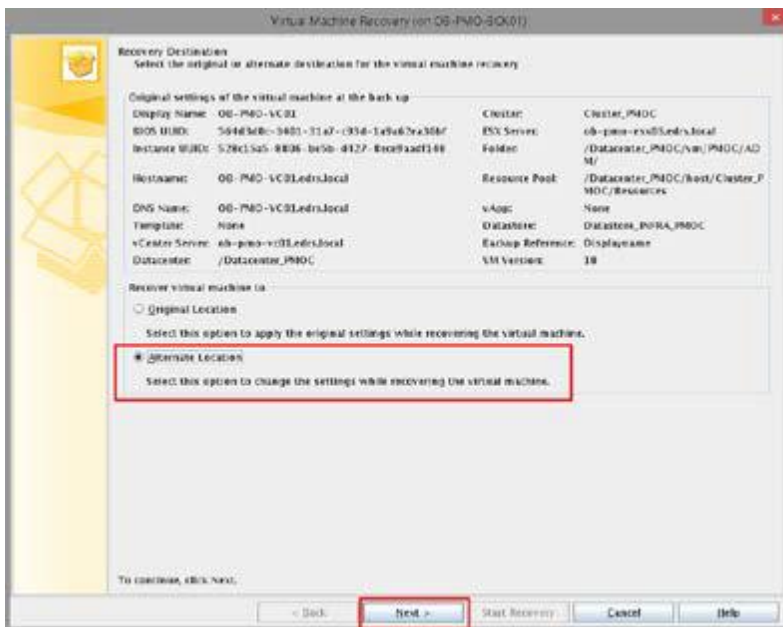


Figure 4-13 Restore: recovery destination

- Select Alternate Location then click “Next.”

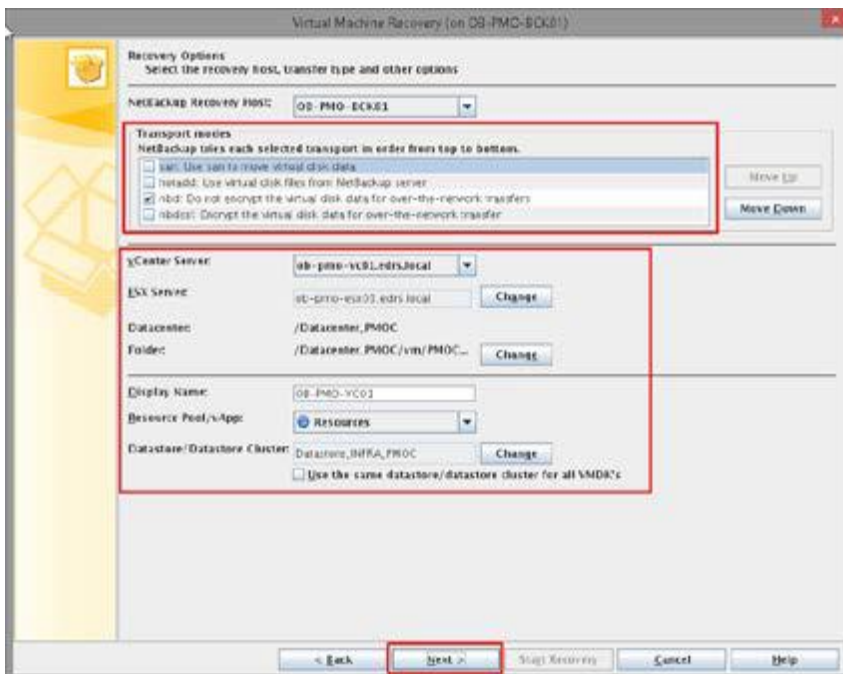


Figure 4-14 Restore: Transport mode and location

- Unselect all transport mode except “NBD” mode.
- Configure different location where you want to recover your virtual Machine then “Next”.

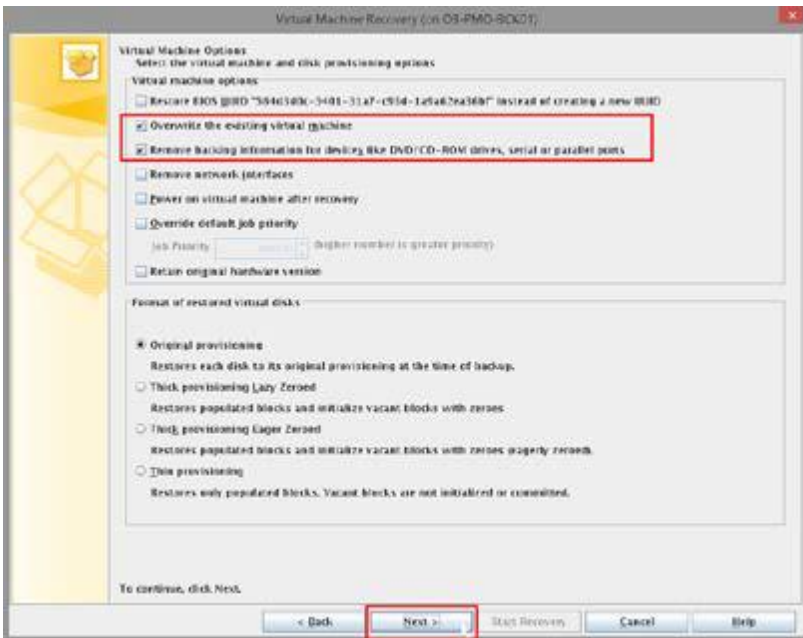


Figure 4-15 Restore: Virtual Machine options

> Configure "Virtual Machine" Options then "Next".

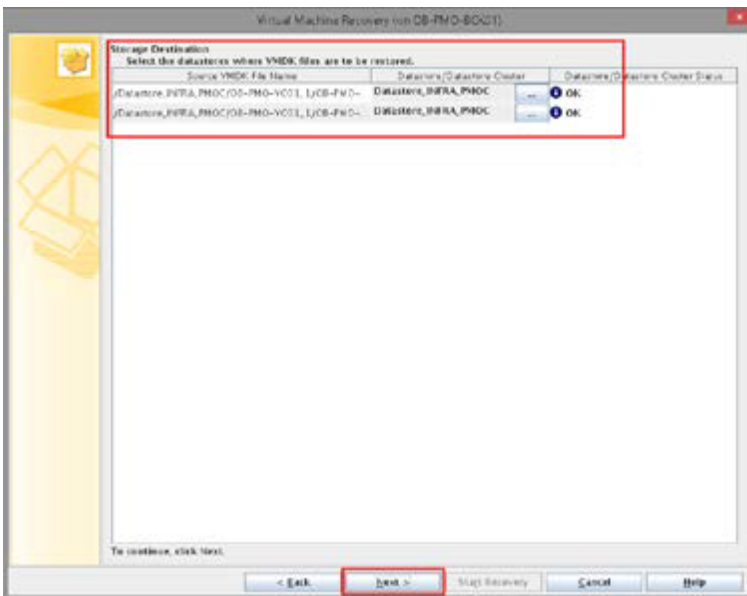


Figure 4-16 Restore: Storage Destination

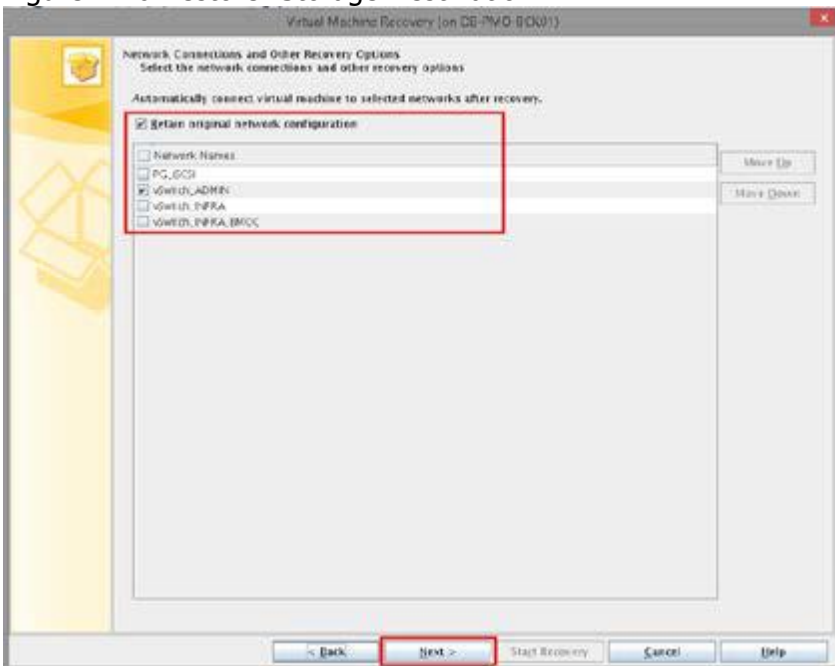


Figure 4-17 Restore: Network Virtual Machine Option

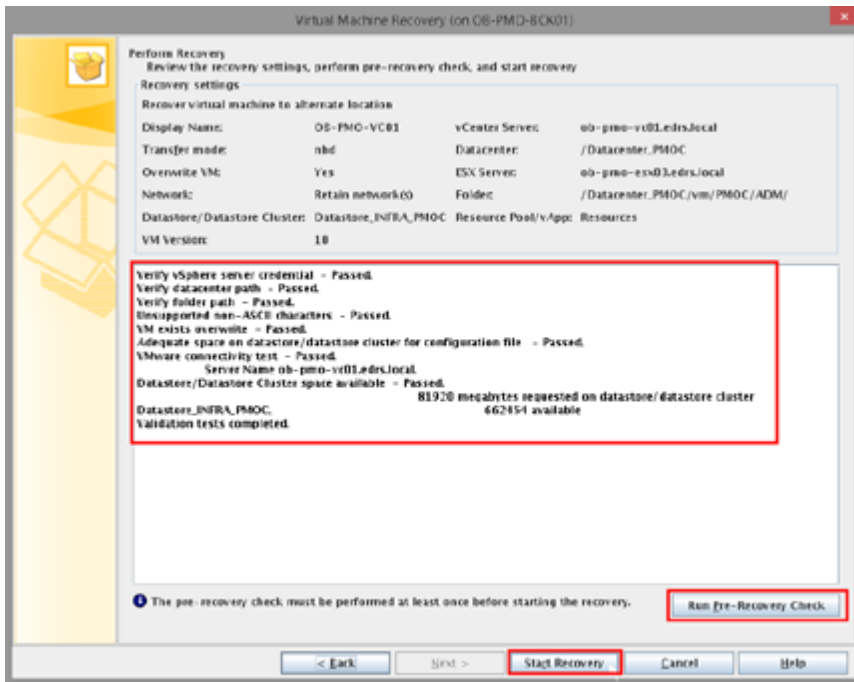


Figure 4-18 Restore: Pre recovery check and recovery

- Execute pre recovery check, control that all test are passed then “**Start Recovery**”.